

As a resident of Saratoga Springs, I am writing to express my concerns over the proposed reconfiguration of the 113<sup>th</sup> State Assembly District north of Albany that is currently represented by Carrie Woerner (D – Round Lake).

Under the original lines that were drawn by the legislature last year, both the Cities of Saratoga Springs and Glens Falls were placed into the same State Assembly District for the first time in several decades. This arrangement has largely been beneficial for the residents of both communities because as small cities they share many commonalities. Historically, both Saratoga Springs and Glens Falls were placed into predominantly rural districts where urban concerns, such as affordable housing, zoning, livability and downtown revitalization often were ignored in favor of agricultural, forestry and land use issues.

Under the redistricting commission's draft proposal, Saratoga Springs and Glens Falls would once again be separated and isolated into two largely rural districts. This would likely restore the political disenfranchisement of these two small cities, both of which are Democratic-leaning communities that gave wide margins to Biden in the 2020 presidential election.

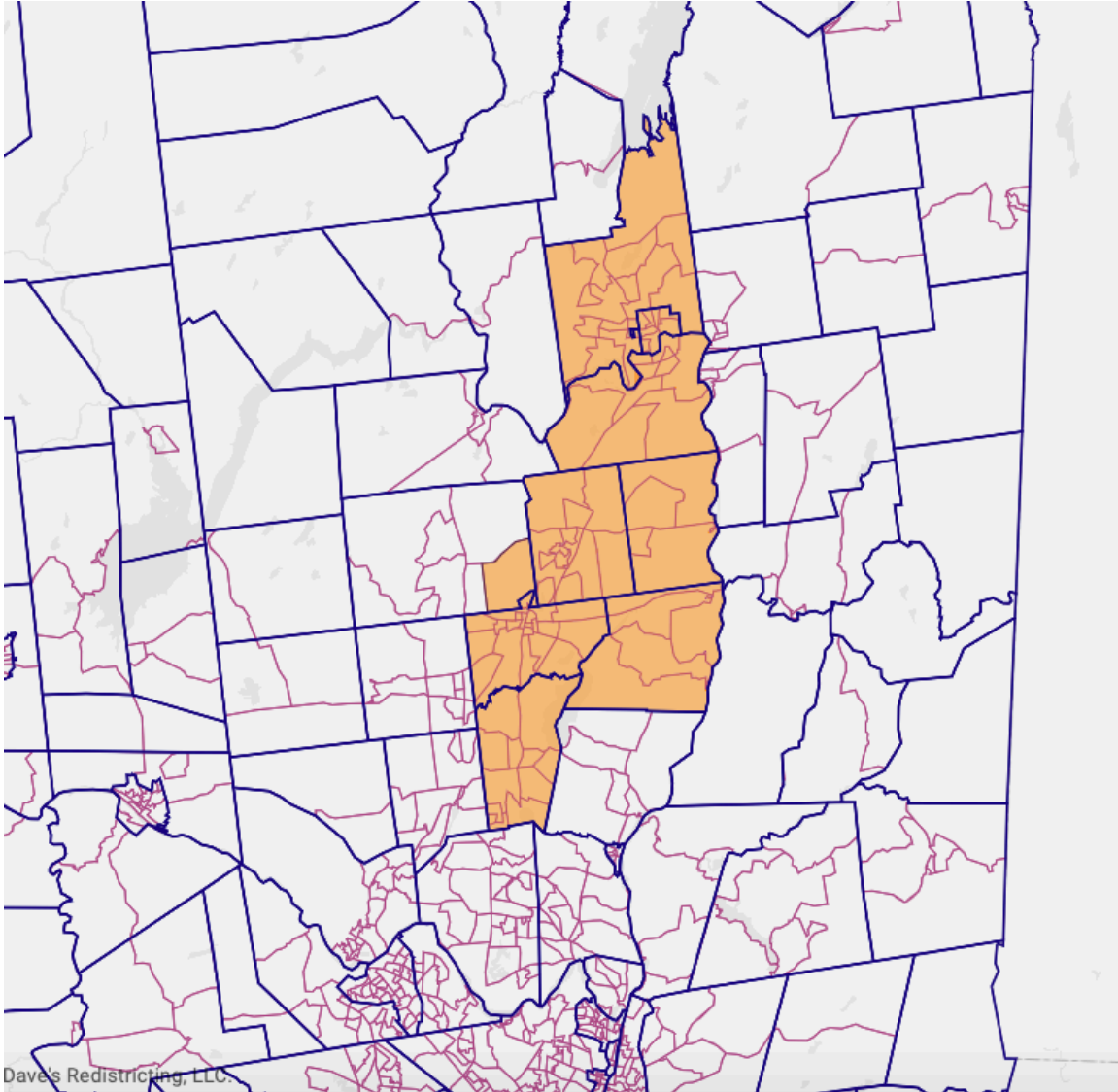
The urban and suburban voters along the Interstate 87 corridor in northern Saratoga and southern Warren Counties finally deserve to have a district where we can receive fair representation and not have our voices diluted by rural interests that largely do not affect us. Because of this, I am asking the Independent Redistricting Commission (IRC) to potentially consider reconfiguring the 113<sup>th</sup> Assembly District as an "I-87 Corridor District" which would be centered around the Cities of Saratoga Springs and Glens Falls, as well as the surrounding commuter suburbs of Malta, Wilton, Moreau and Queensbury.

The creation of an urban-suburban I-87 Corridor District in the northern Capital Region would likely unite communities that share many commonalties and other similar interests.

Thank You,

Colin B. Neal  
Saratoga Springs, NY

At Dave's Redistricting App, I have created a map of a hypothetical I-87 Corridor District. In Saratoga County, the district would include the City of Saratoga Springs, as well as the Towns of Malta, Saratoga, Wilton, Northumberland, Moreau and part of Greenfield. In Warren County, the district would include the City of Glens Falls and the Town of Queensbury. You may view the map at <https://davesredistricting.org/join/a683077b-da72-43e6-a16a-387ac56193ea>



The rationale behind an I-87 Corridor District:

**Would unite both of the region's two small cities with commonalities:**

As I mentioned in my letter, both the Cities of Saratoga Springs and Glens Falls have many similarities, such as downtown districts that have either been revitalized or are currently undergoing revitalization. In addition, both small cities have vibrant arts communities, such as Beekman Street (Saratoga Springs, The Shirt Factory (Glens Falls), Saratoga Arts and LARAC (Glens Falls).

**Would unite the region's commuter suburbs and exurbs with commonalities:**

Malta, Wilton, Moreau and Queensbury are all largely commuter suburbs-exurbs where most residents commute 30-50 miles south to work in the inner Capital Region cities of Albany, Schenectady and Troy. These four suburbs-exurbs would

benefit by having a collective voice in the same district.

**Would unite the region's colleges, universities and higher-level education facilities:**

It would be beneficial to consolidate all of the region's colleges and universities, including Skidmore, Empire State College, as well as both the Queensbury and Wilton campuses of SUNY Adirondack into the same district. There is also logic to placing the main SUNY Adirondack campus in Queensbury in the same district as the GlobalFoundries chip manufacturing plant in Malta in order to strengthen workforce development programs.

**Would unite the region's tourism economy:**

This district would contain the Saratoga Race Course, Saratoga Performing Arts Center, as well as the Saratoga National Battle Monument in Schuylerville. In addition, because the district would end at the southern Lake George shoreline, it would essentially help to bring forth unification between the Upstate New York tourism meccas of Saratoga Springs and Lake George.

**Would unite most of the region's recreational facilities:**

Both Saratoga Spa State Park, as well as the majority of Moreau Lake State Park, the recreational paths around Saratoga Springs (Spring Run Trail, Bog Meadow Brook Trail), Malta (Zim Smith Trail) and most of the Warren County Bikeway would be in the same district.