

TO: **The NY Independent Redistricting Commission**

DATE: January 10, 2023

PROPOSAL: Adjust the boundary of the 136<sup>th</sup> Assembly District to **“Make the Town of Brighton Whole”**.

FROM: Jim Hooper, [jhooper103@aol.com](mailto:jhooper103@aol.com), 191 Bastian Rd, Rochester, NY 14623 AT: 585-424-2678

## **Make the Town of Brighton Whole**

Today, I propose that the commission make measurable but modest changes to Assembly District 136 and those adjacent for the singular purpose to “make a town inside the 136<sup>th</sup>, the Town of Brighton whole”. In other words to restore the Town under one assembly district.

The Town of Brighton is a wrap around suburb of Rochester in Monroe County. Previously one assembly member represented the entire town. The IRC’s current draft fractures the town, breaking off an entire portion of the Town of Brighton where I have lived for a half-century.

The broken piece of the district I ask you to fix is the portion of the town entirely south of the Erie Canal. But it is best known as it appears on maps as “West Brighton”. Brighton shares a variety of characteristics and is a true “community of interest” in the best sense of the expression.

## **Specific Example Adjustments to sections of the 136<sup>th</sup> and adjacent districts**

To be helpful I include in the proposal examples using both maps and street boundaries to both restore the town and rebalance the populations in any other districts affected. In doing so I’ve also taken the best care I can to ensure my examples preserve if not improve your principle criteria for districts.

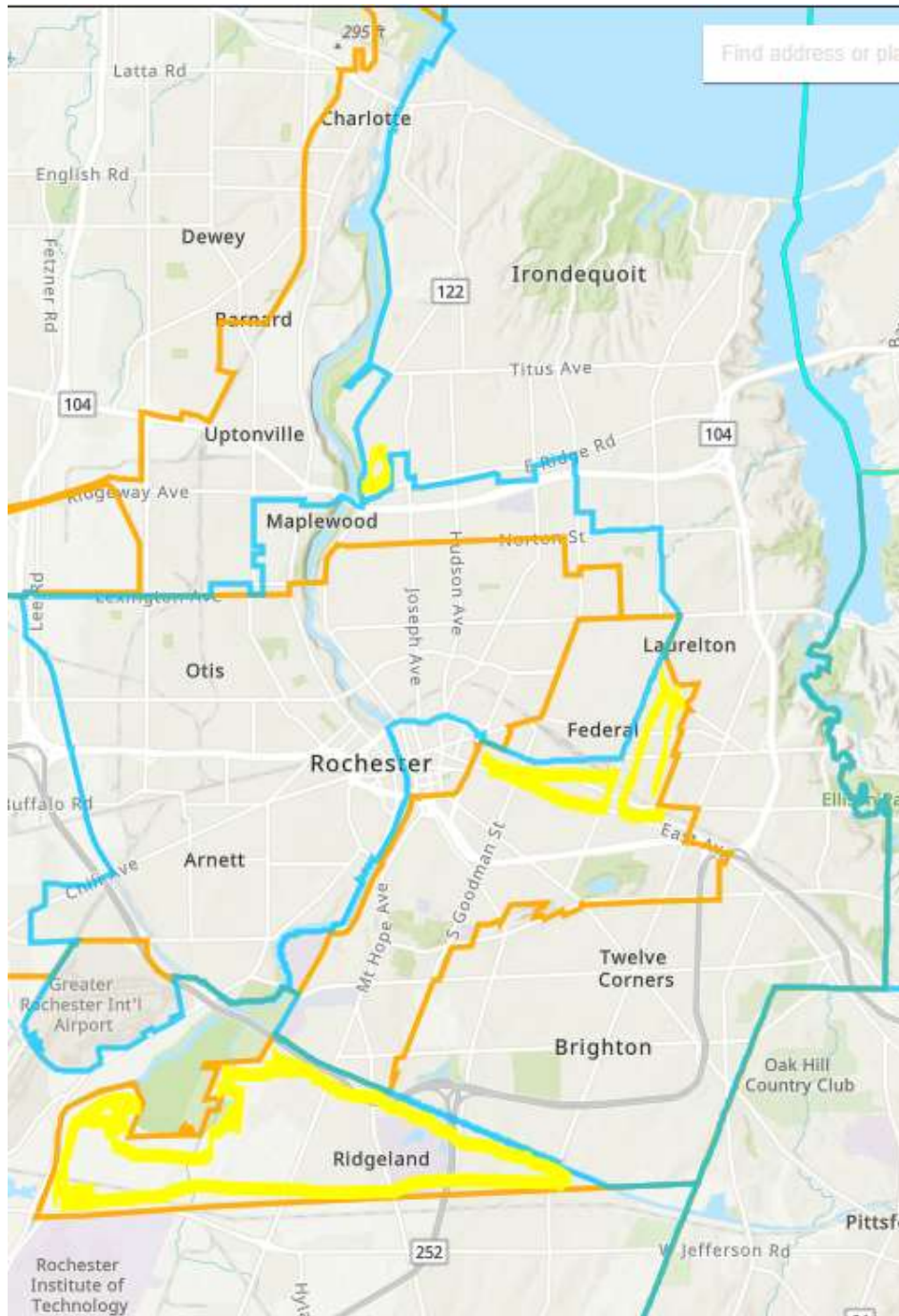
For example there is section of the City of Rochester bounded by Long Acre and East Ridge which could be added to the assembly district representing a large portion of the City of Rochester. There are at least two more sections of the City on its East Side which could be added in similar fashion. Then another adjustment needed after moving West Brighton to the 136<sup>th</sup>, Two sections of the City can be added to the 138<sup>th</sup> representing Chili, Gates, and two other Towns. One or both of these final changes would add City neighborhoods west of Mt. Read Blvd. For more specific details to identify these examples please consult the map segments and street boundaries attached to this proposal.

As a final comment I’d like to stress why it is so important to “Make the Town of Brighton Whole” even as adjustments are made to nearby districts especially the City of Rochester. I wish to note:

- Parts of the suggestions in this proposal make portions of the City more whole by adding City neighborhoods to a City district for example those on the North and the East,
- The other areas on the West that add portions of the City to adjacent suburbs are sensible in that they are compact areas,
- The areas on the West have a new border of Mt. Read Blvd, a major highway that already divides East and West,
- Both changed districts have portions of the City as well as Towns. In this sense the people in the towns in both districts maintain comparable and therefore balanced shares of the City as well as towns,
- Most importantly, of all the jurisdictions the City is by far the largest and most populous and therefore least likely to be made completely whole. In other words, there are more districts bordering the City than most towns. It is also the most central population center. It is therefore unavoidable to ensure the need for equal population size of the districts that the City to share populations as well as borders.

Thank you for your attention. Don’t hesitate to let me know if you’d like me to clarify the proposal further. Jim Hooper, 585-424-2789

ADD TO THE 136 <sup>TH</sup>	REMOVE FROM THE 136 <sup>TH</sup>
<p>1. The large 'shoe' shape at the <b>bottom</b> known as '<b>West Brighton</b>' has been splintered from its town: 'Brighton'. It needs to be <b>put back into the 136<sup>th</sup></b> order to 'make the Town of Brighton 'whole' inside the 136<sup>th</sup>. Do this by adding all land north of Brighton-Hen-T-L-Rd</p>	<p>2. To compensate for restoring West Brighton to Brighton, there are <b>at least 3</b> areas of the 136<sup>th</sup> that can be returned to the City district. They are all circled in <b>YELLOW</b> also:</p> <ol style="list-style-type: none"> <li>(see near the word <i>Maplewood</i> on the map) Bordered (AS SHOWN) by the                     <ul style="list-style-type: none"> <li>• River on West, • Clinton on East, • Long Acre on North, and • East Ridge on south.</li> </ul> </li> <li>(see near the words <i>Laurelton &amp; Federal</i> on the map) Bordered (AS SHOWN) by                     <ul style="list-style-type: none"> <li>• Atlantic on South. • Culver on West, • Jersey, Minnesota on East, • Merchant on North</li> </ul> </li> <li>(see near the words <i>Federal</i> on the map) Bordered (AS SHOWN) by                     <ul style="list-style-type: none"> <li>• Atlantic on North. • Culver on East, &amp; • University on South</li> </ul> </li> </ol>



**ADD TO THE SPENCERPORT, GATES, CHILI, HENRIETTA** assembly district

3. Add one or both of the following contiguous portions of the City to the Spencerport, Gates, Chili, Henrietta assembly district:

a. (bordering the Erie Canal on the upper half of the map **AS SHOWN**)

- Lexington on North, • Erie Canal on West, • I- 490 on South, • Mt. Read on East
- I- 490 on North, • Erie Canal on West, • Ave on South, • Mt. Read & Lincoln Ave on East

