

**SUFFOLK COUNTY
WRITTEN TESTIMONY**

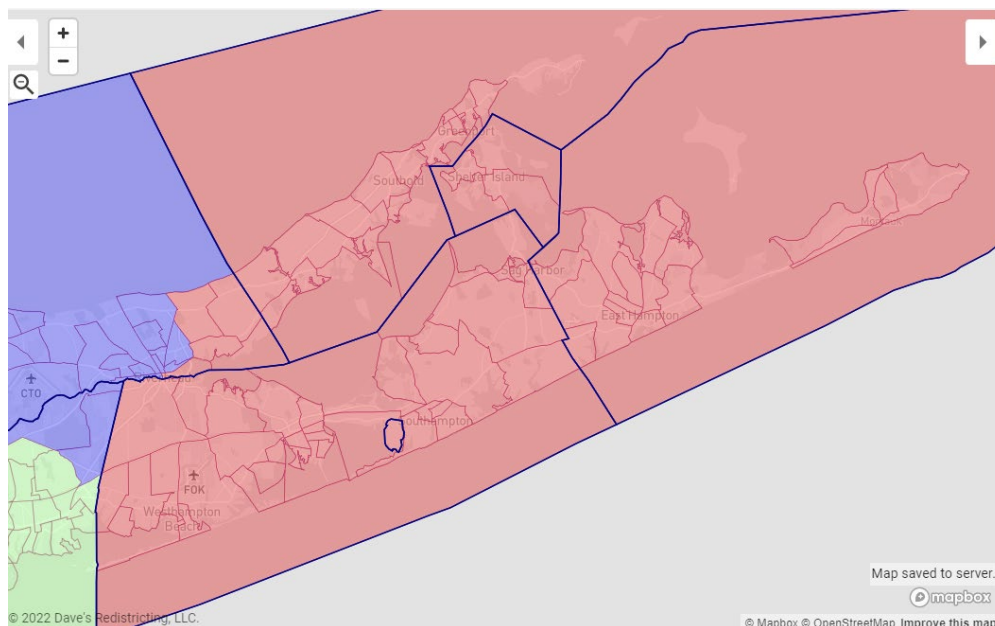
I have constructed a map more in line with the existing communities and relationships that exist on Long Island, and Suffolk more specifically, than the draft map produced by the commission. A detailed breakdown can be made available if interested, but the broad details can be seen in the attached screenshot.

Broadly, however: This map is more in line with the ones used by the Special Master for the State Senate and adjusts elsewhere for obvious population based reasons.

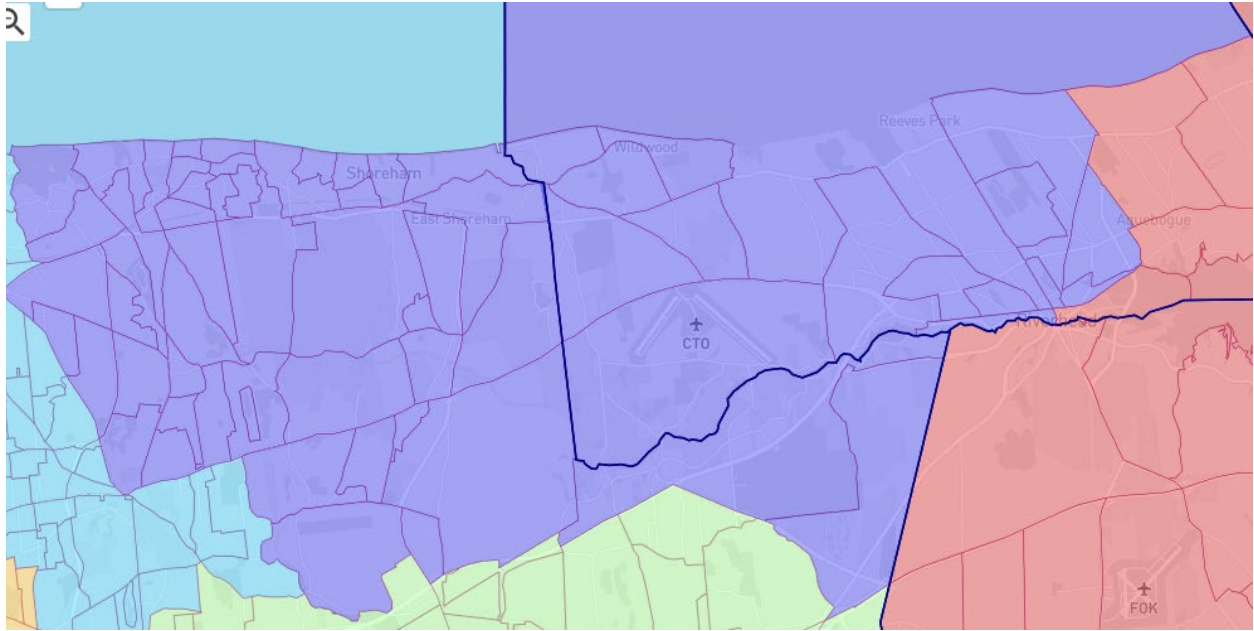
Fewer districts cross town lines than in the commission draft and where they do it is for a clear community of interest. It also reduces the number of cross-county districts from two to one in the previous map used in the 2022 election.

The theme of my proposed map is using human and natural themes and existing communities to form districts. To summarize in order:

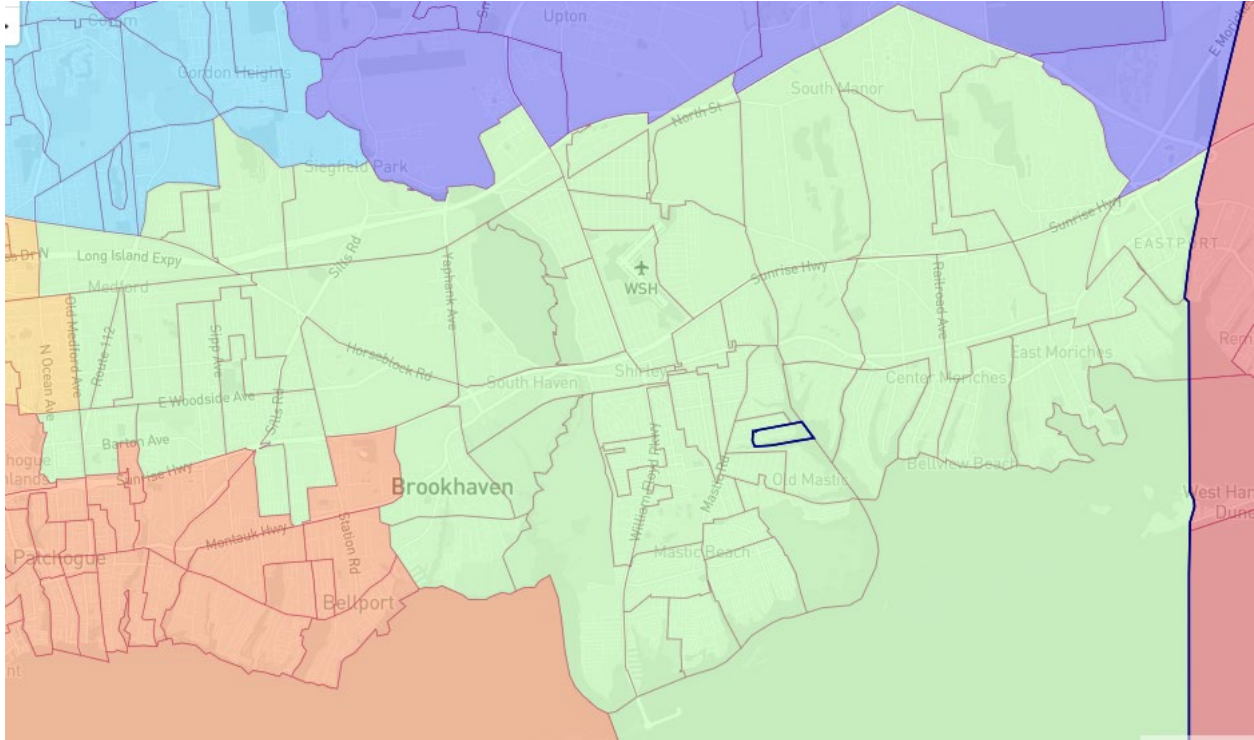
AD1 changes little, shifting some Brookhaven territory around and picking up some of Riverhead but forming a more natural division between the "downtown" of the Riverhead community and the section of the town further west that has more in common with north Brookhaven. As an advantage, my map makes it possible to drive around AD1 without resorting to a ferry!



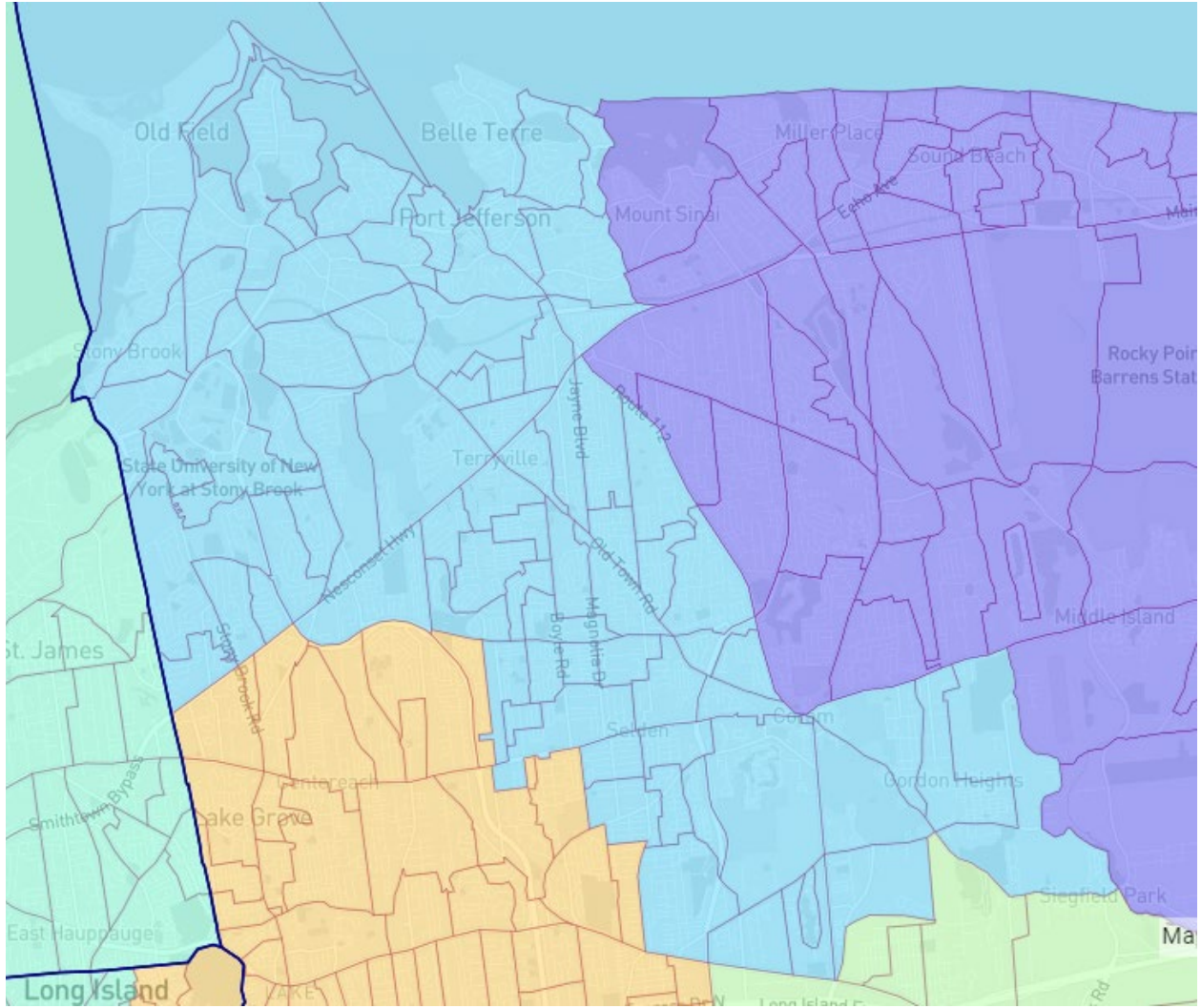
AD2 also changes little, centering somewhat further west and adjusting its southern border but the composition of the district remains largely the same.



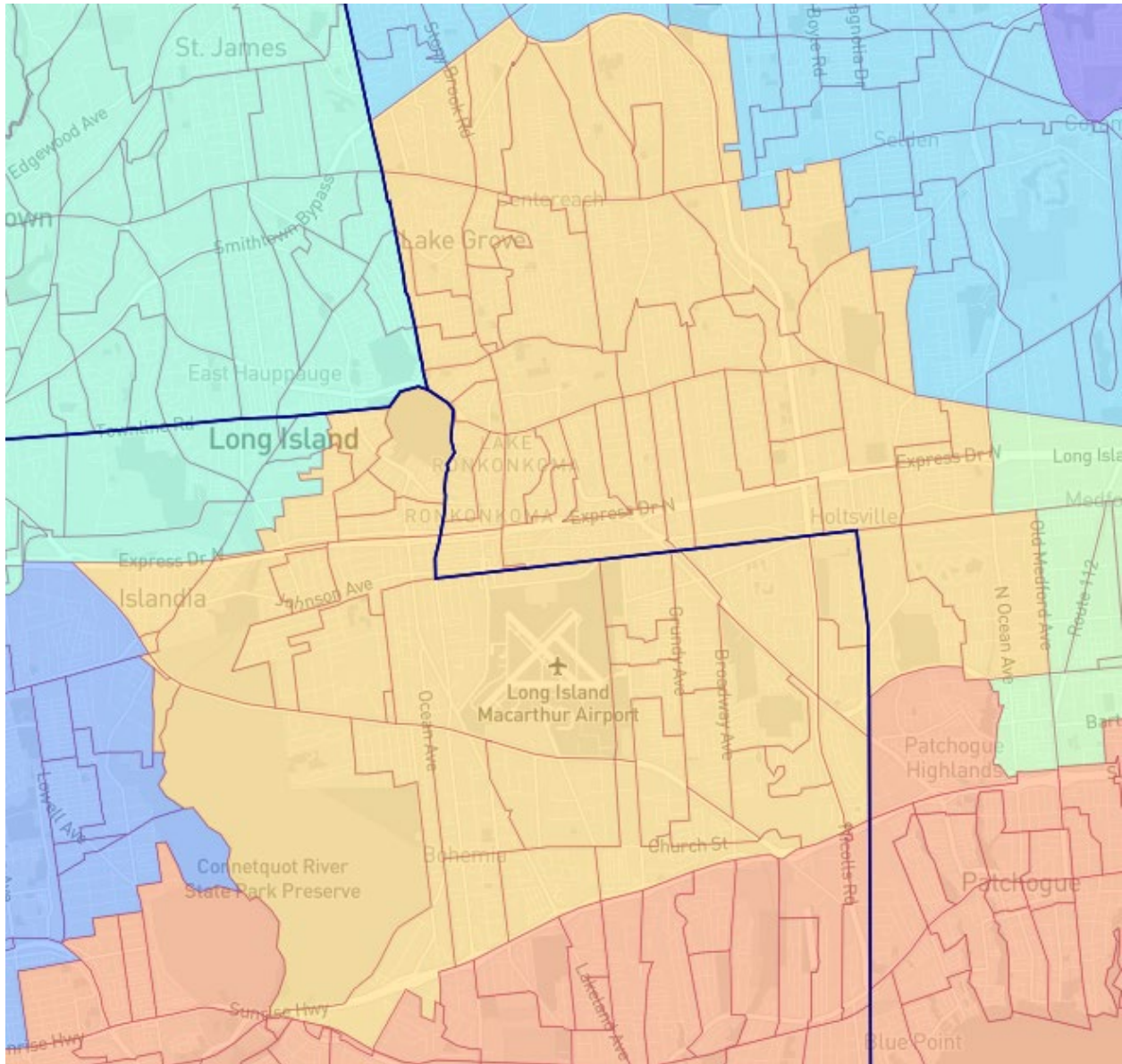
AD3 also changes relatively little, although it sheds Bellport Village and some of central Brookhaven for more of eastern Brookhaven, including most of the Eastport-South Manor community.



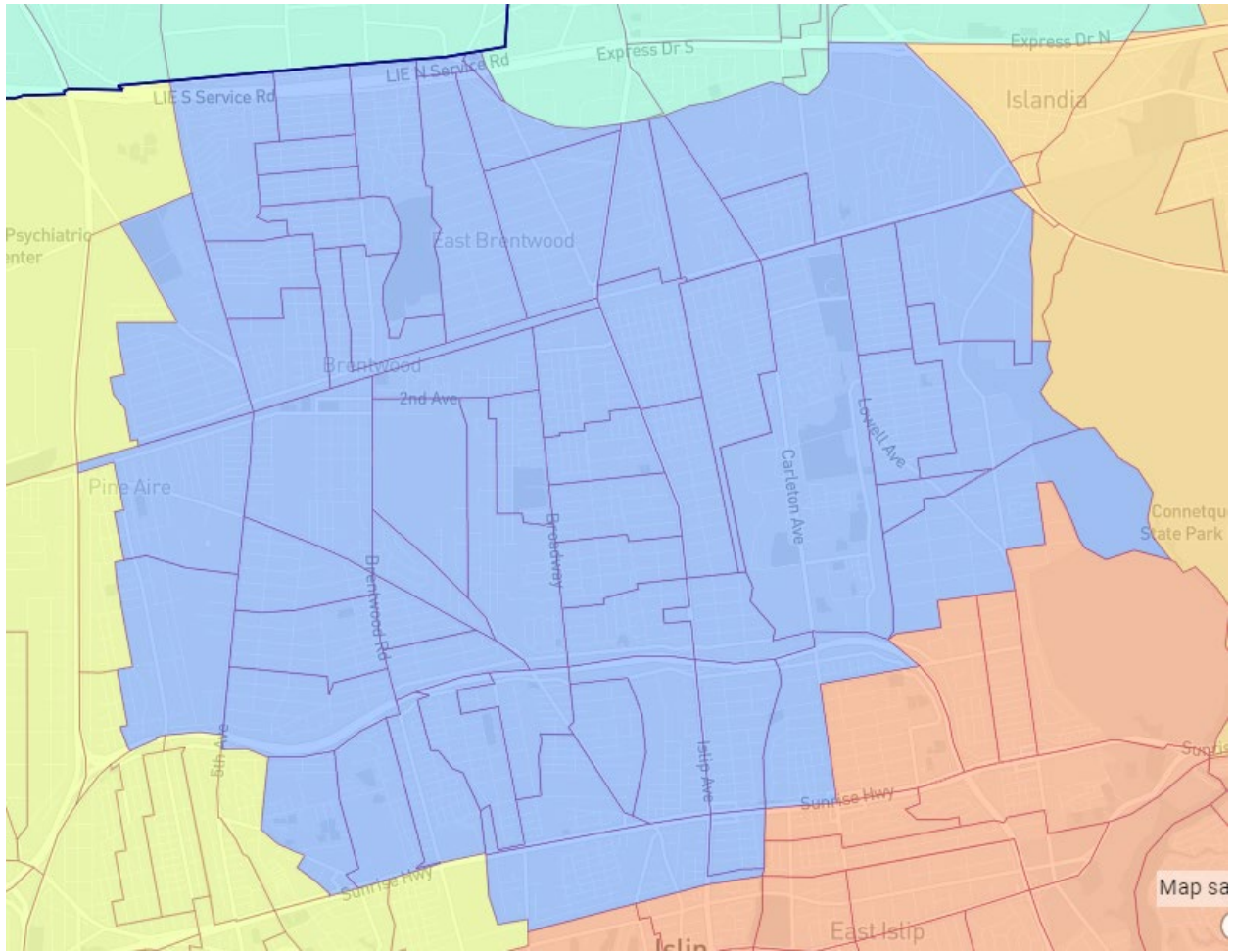
AD4 changes very little, retaining the connection desired by Gordon Heights residents to stay connected to the Three Villages community. Some EDs on the periphery are adjusted primarily for population balance.



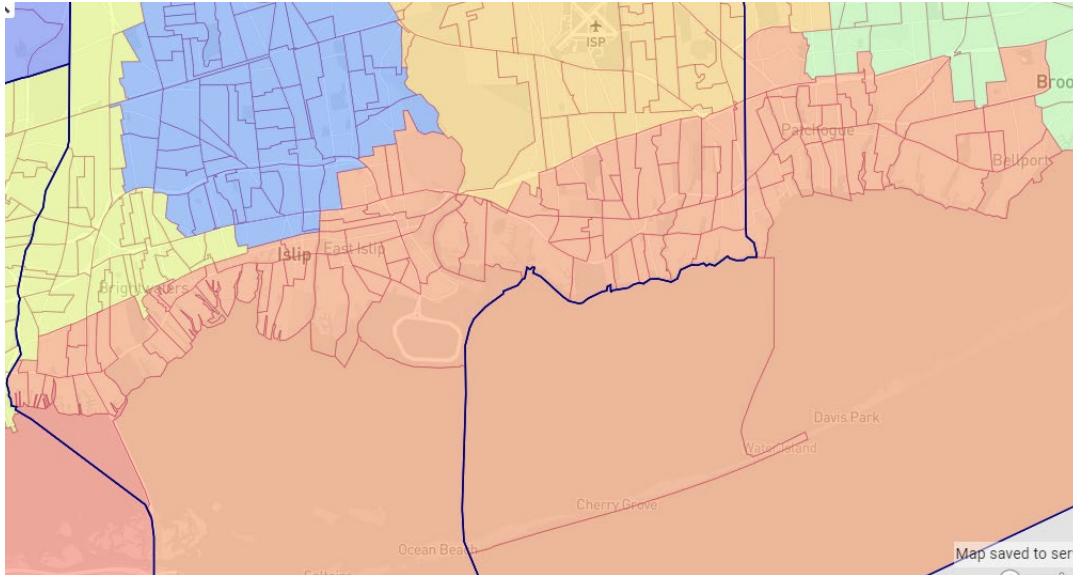
AD5 becomes, truly, a Lake Ronkonkoma community of interest, straddling Brookhaven and Islip and containing Macarthur Airport.



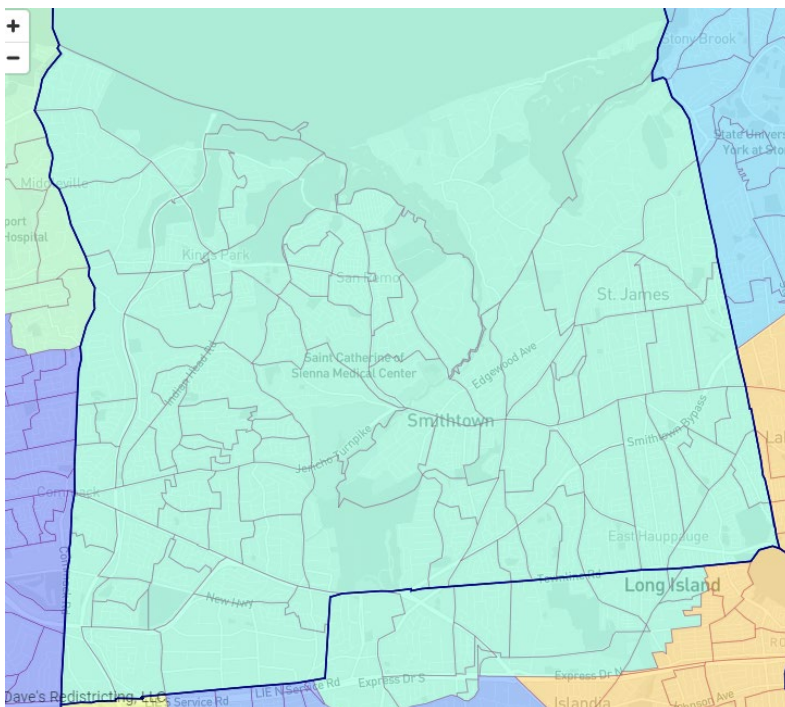
AD6 remains Suffolk's Hispanic majority district. In this proposal, Central Islip remains intact, not split. It is a community that has frequently been split as a matter of convenience when redistricting occurs (see the current Town of Islip map) and it is unfairly discriminatory to the minority-majority population of the hamlet to split them and their interests. This keeps them with their current district partners in East Brentwood and the Assemblyman who has ably represented them the last decade. The commission's proposal, which splits CI in two, adds some but not all of the Hauppauge school district, and extends AD7 up to Suffolk Avenue, does not accurately reflect the characters of these communities. Moreover, the currently map that gives AD7 the Connetquot River State Park splits another common community that is better reflected by being unified with AD5. Both of these are rectified in my draft map.



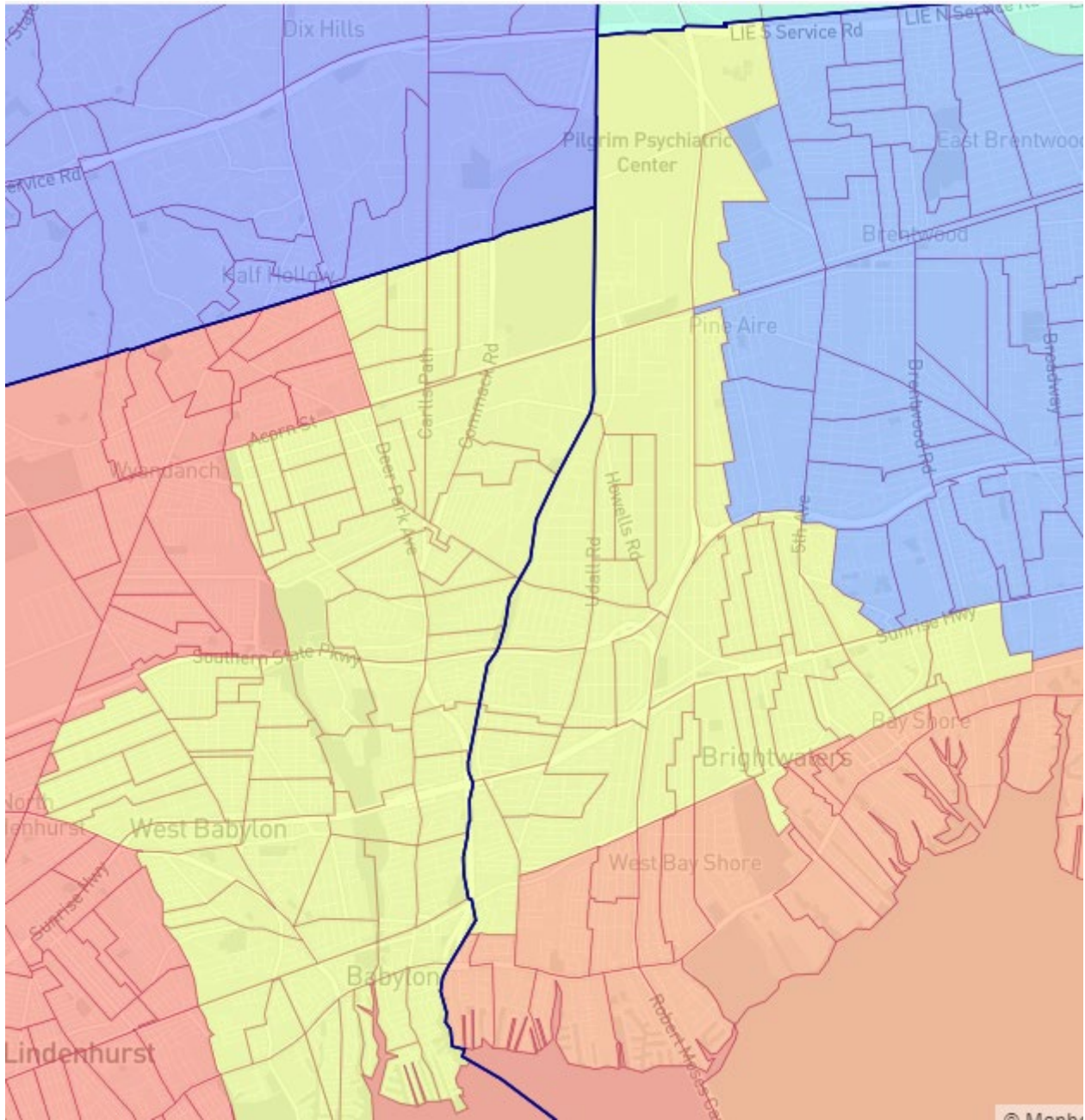
AD7 then, properly, becomes a Great South Bay community of interest, spanning the major downtowns of the central South Shore, which share a great deal in terms of temperament and interests. The district functionally stretches from the downtown of Bay Shore to the downtown of Bellport Village and gives those communities, with much in common, a single voice to represent their common interests.



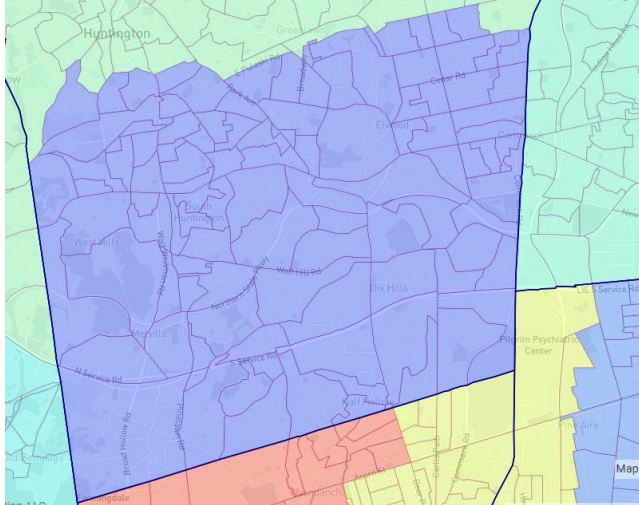
AD8 changes very little. It is primarily a Smithtown centered district, dipping into Islip for the hamlet of Hauppauge, which as a school district straddles both towns. In this regard a community is kept together with a single representative.



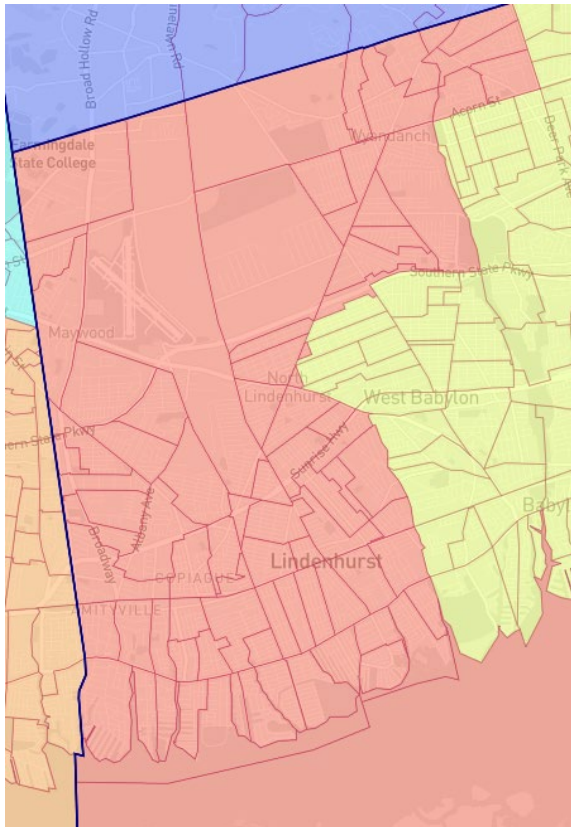
AD9 changes significantly, undoing the eyesore of using Fire Island to connect two incredibly different communities. This proposal unifies the communities of Baywood, North Bay Shore, and West Bay Shore in Islip with very similar communities across town lines in Deer Park, North Babylon, and West Babylon. By the end of the decade it is possible this district could become, if not minority majority, then certainly a minority opportunity district, increasing the variety of representation that Suffolk County sends to Albany. It also has similar socioeconomic characteristics that make a union a significant improvement on the current AD9.



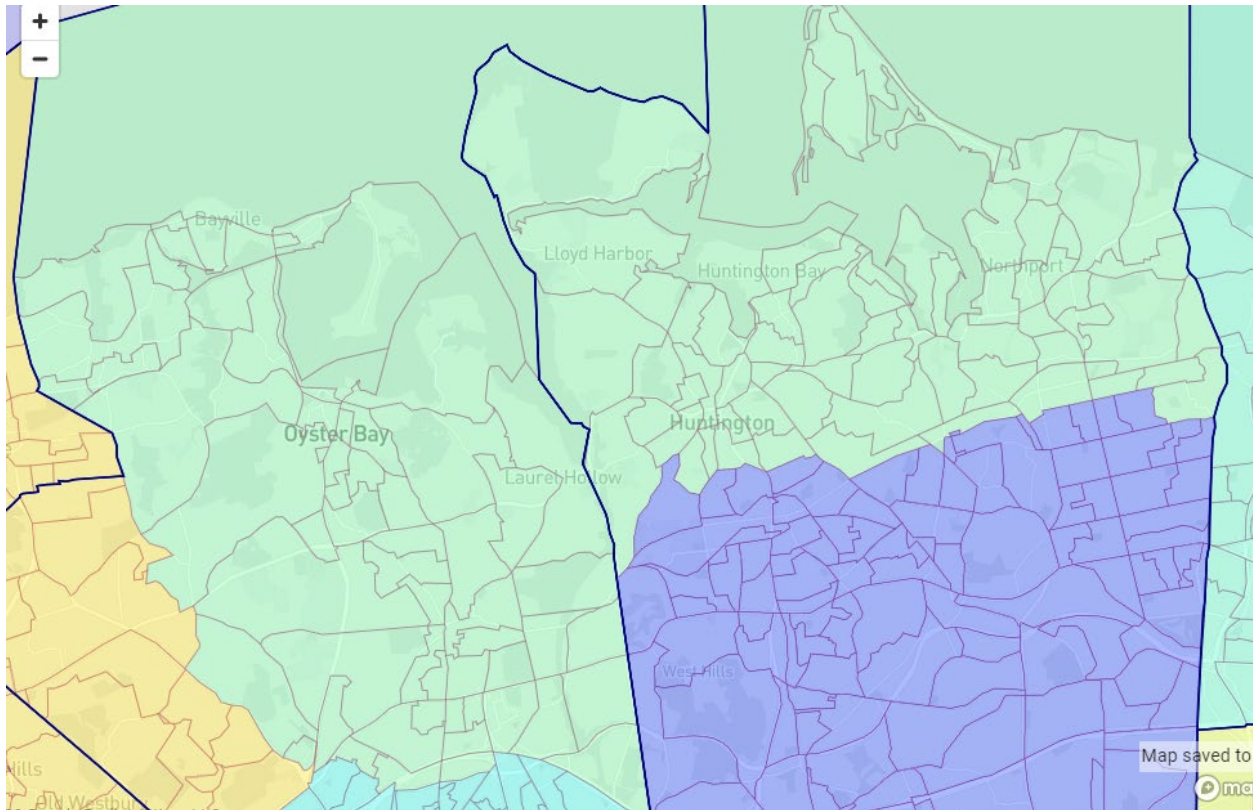
AD10 is the core of Huntington town, going from the border with Babylon up to a line roughly along Pulaski Road. This road is the functional division in some ways between the traditionally suburban section of Huntington and the more "downtown" coastal centers of Greenlawn, Huntington Village, and so forth.



AD11 becomes more compact, shedding entirely any territory outside the town of Babylon, while staying a minority-majority district.



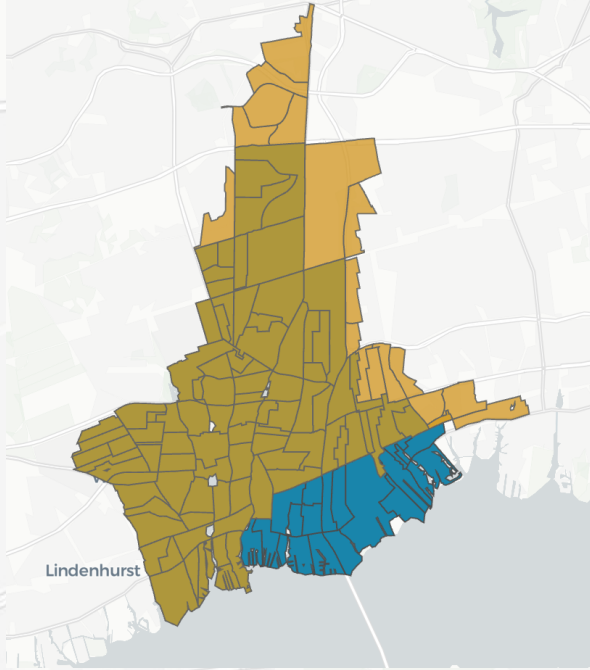
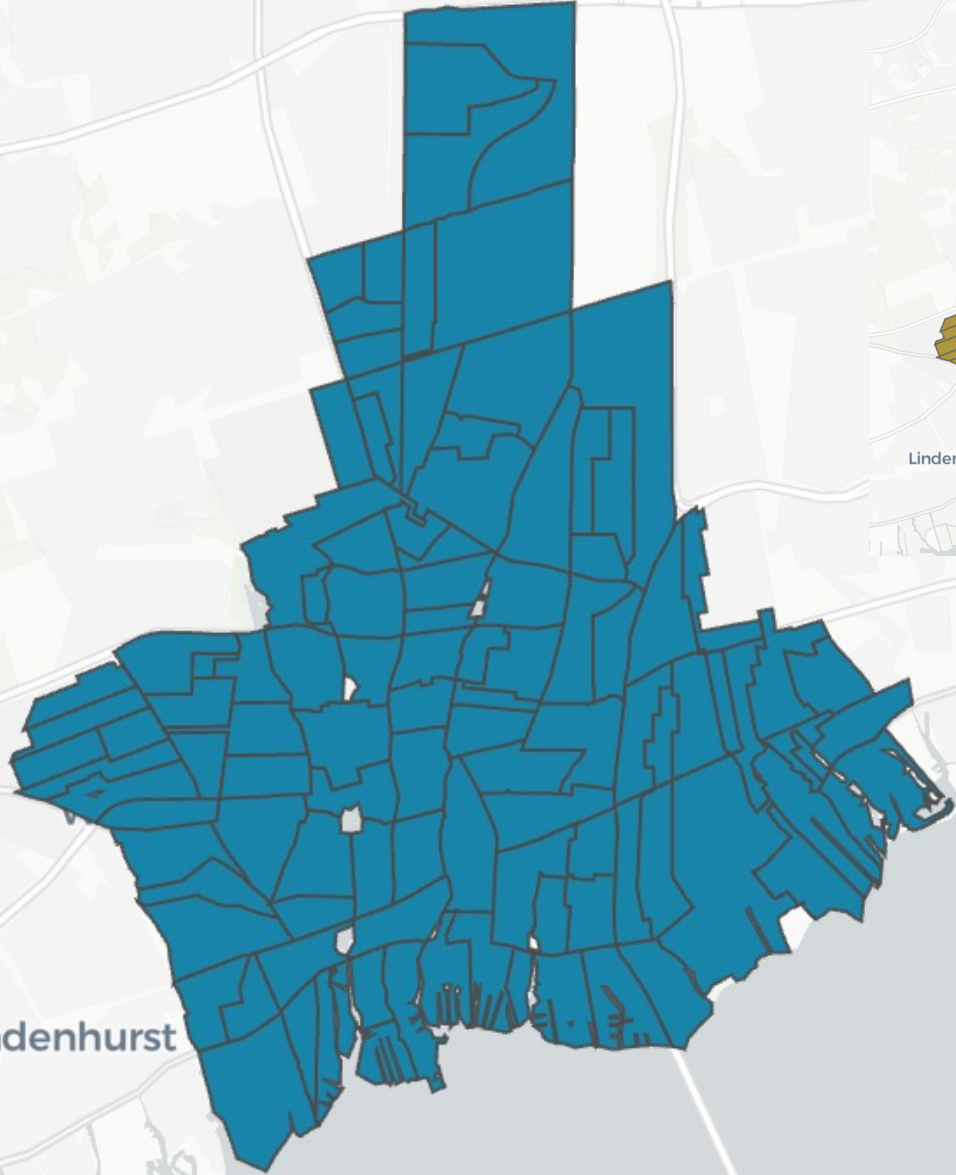
Finally, AD12, instead of stretching from the north shore of Huntington through Babylon and Islip almost to the Great South Bay, becomes a North Shore community of interest by combining the villages of Huntington town to the similar communities of northern Oyster Bay in Nassau.



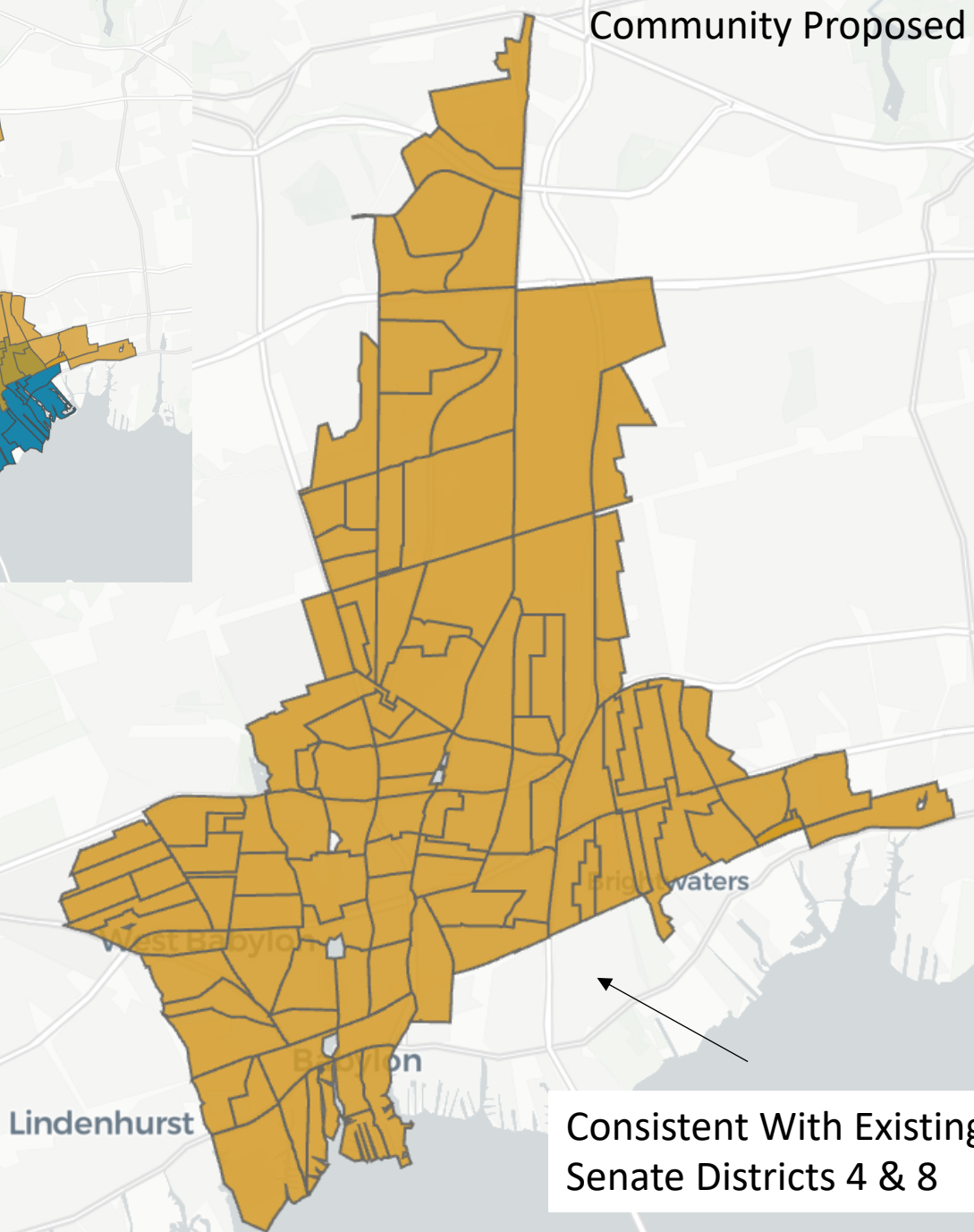
A link to the Dave's file used to construct this map can be found here. Please note the map only consists of Suffolk and Nassau and the Nassau section was more primarily used to ensure my districts were sized properly rather than a serious attempt to redraw the map of a community I do not live in. Ideally some of these lines would be adjusted—for example, in North Bellport, an effort to split some districts that straddle Sunrise Highway would produce maps that more accurately reflect conditions on the ground—but I'm not quite technically savvy enough for that. Another spot would be the small section of the proposed AD9 that darts south of Union Blvd, which would make more sense in AD7.

<https://davesredistricting.org/join/58895d73-4f98-4834-a32b-56544e113441>

IRC Proposed Map



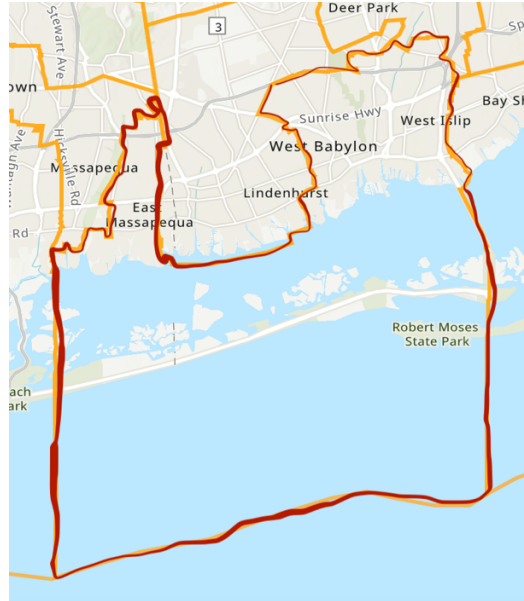
Community Proposed Map



Consistent With Existing Senate Districts 4 & 8

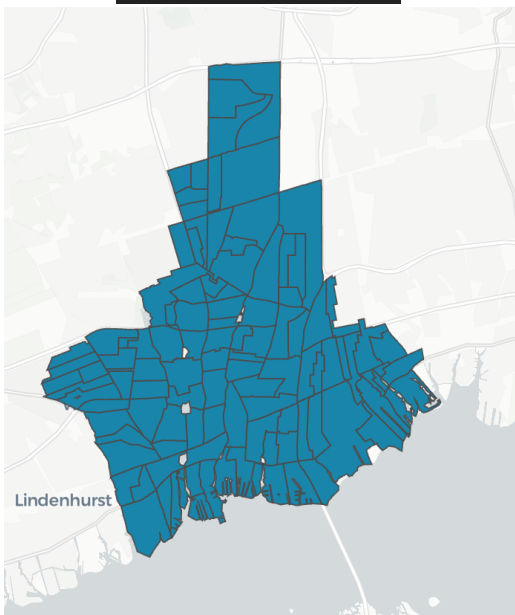
We want to thank the Commission for fixing what has, for over a decade, been a flagrantly inappropriate and deeply problematic Assembly District in Suffolk County, that stretched incredulity as much as it stretched across Nassau and Suffolk County via a creative use of Fire Island.

AD-9

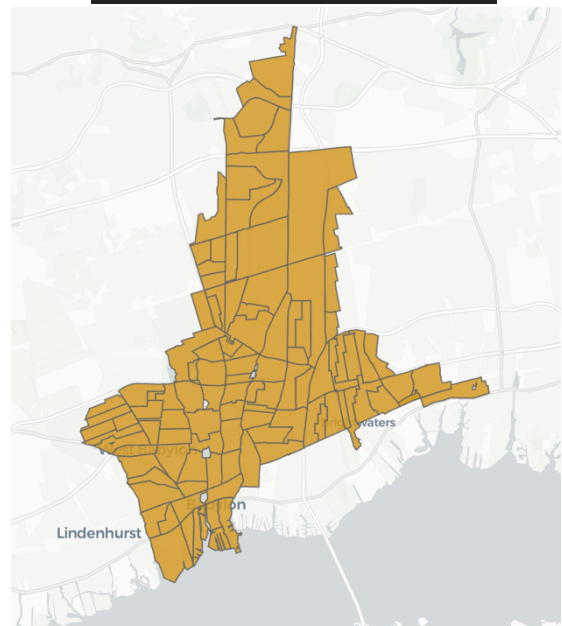


Because the history of this district is so fraught, it is critically important that it be modernized a bit further to ensure that the people are part of a district that structurally makes sense, have a district that is consistent with the Senate Lines drawn by the non-partisan Special Master last year, and protects communities within Babylon Town and Islip Town that have similar interest, and lastly, is easy for folks in the community understand. Here are the proposed changes from the Commission & Community.

IRC Proposed Map



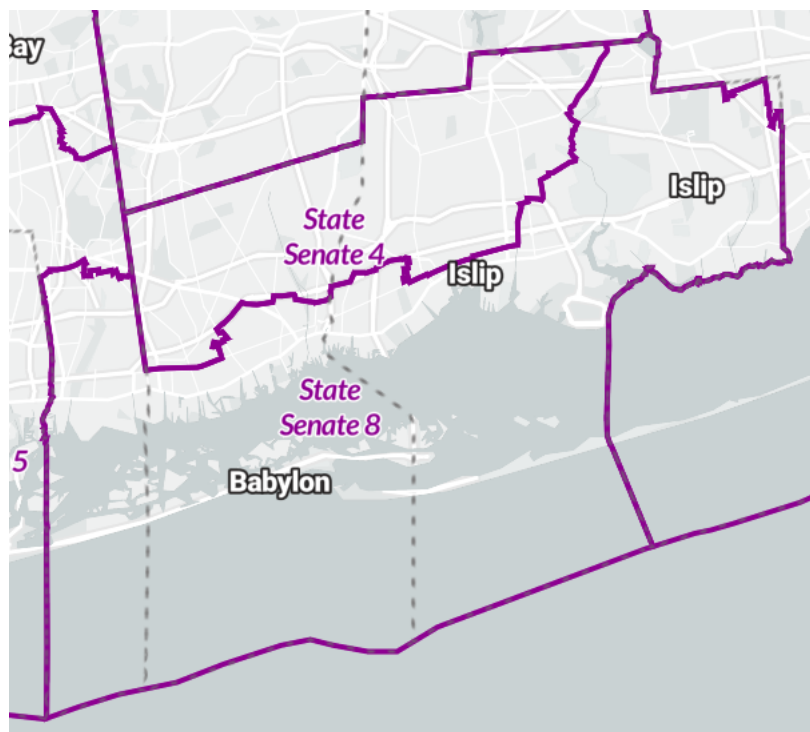
Community Proposed Map



As currently proposed this district by design will have multiple split Towns and school districts. That is inevitable based on the population of the area. Therefore, we are informing the committee that there are some changes we would like to see, to ensure that communities that share common interests, even if they don't always share the same local government or school district.

In the Senate Districts Drawn by the Special Master, this fact of life is acknowledged. West & North Babylon and West & North Bay Shore share more common interests with each other than either is to any of the EDs down by the water, even within their own respective Towns and incorporated Villages. The reverse is also true. That applies to incomes, race, places of worship and where folks gather for community events.

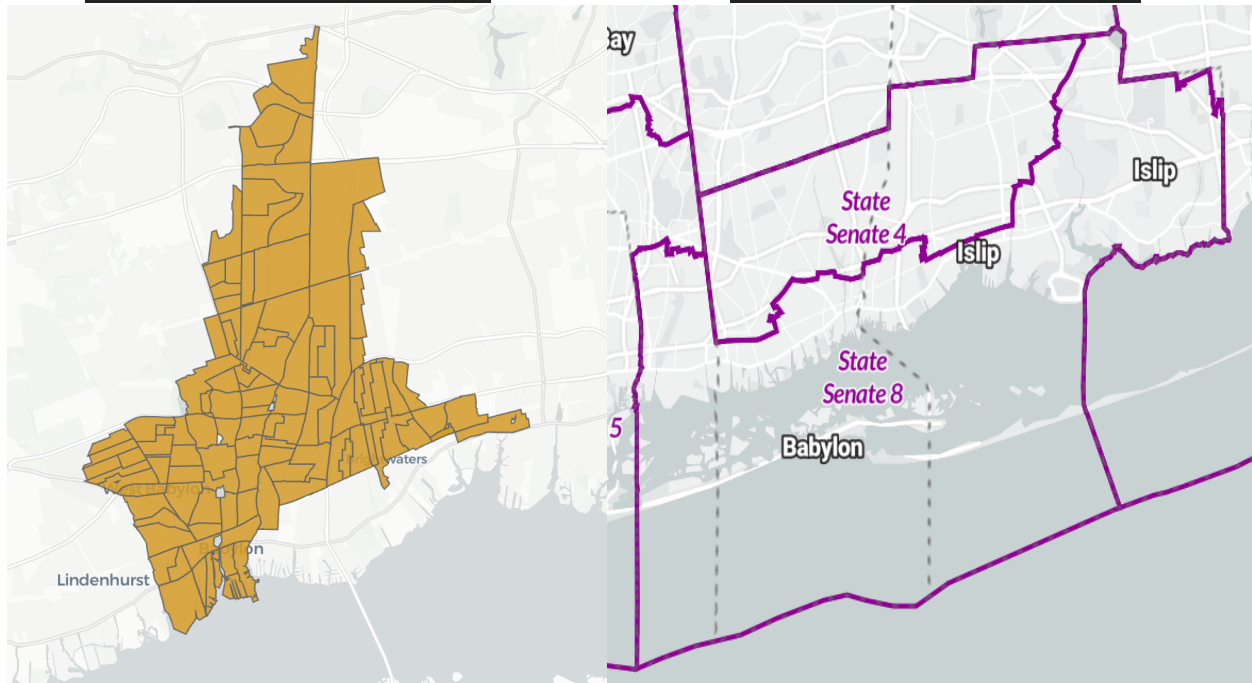
Current Senate Districts



Once again, the Senate lines drawn by the Special Master recognize that the personality of this region is defined by being "North" or "South" of a few key physical landmarks. In SD 4 and SD 8, to keep the communities of common interest together, the Special Master cut across the Incorporated Villages of Brightwater and Babylon not through a governmental line, but a physical marker: Long Island Railroad Line. A similar path would be a helpful guideline for this new district particularly on the Eastern Side where it borders AD-6 & AD 7.

Community Proposed Map

Special Master Senate Map



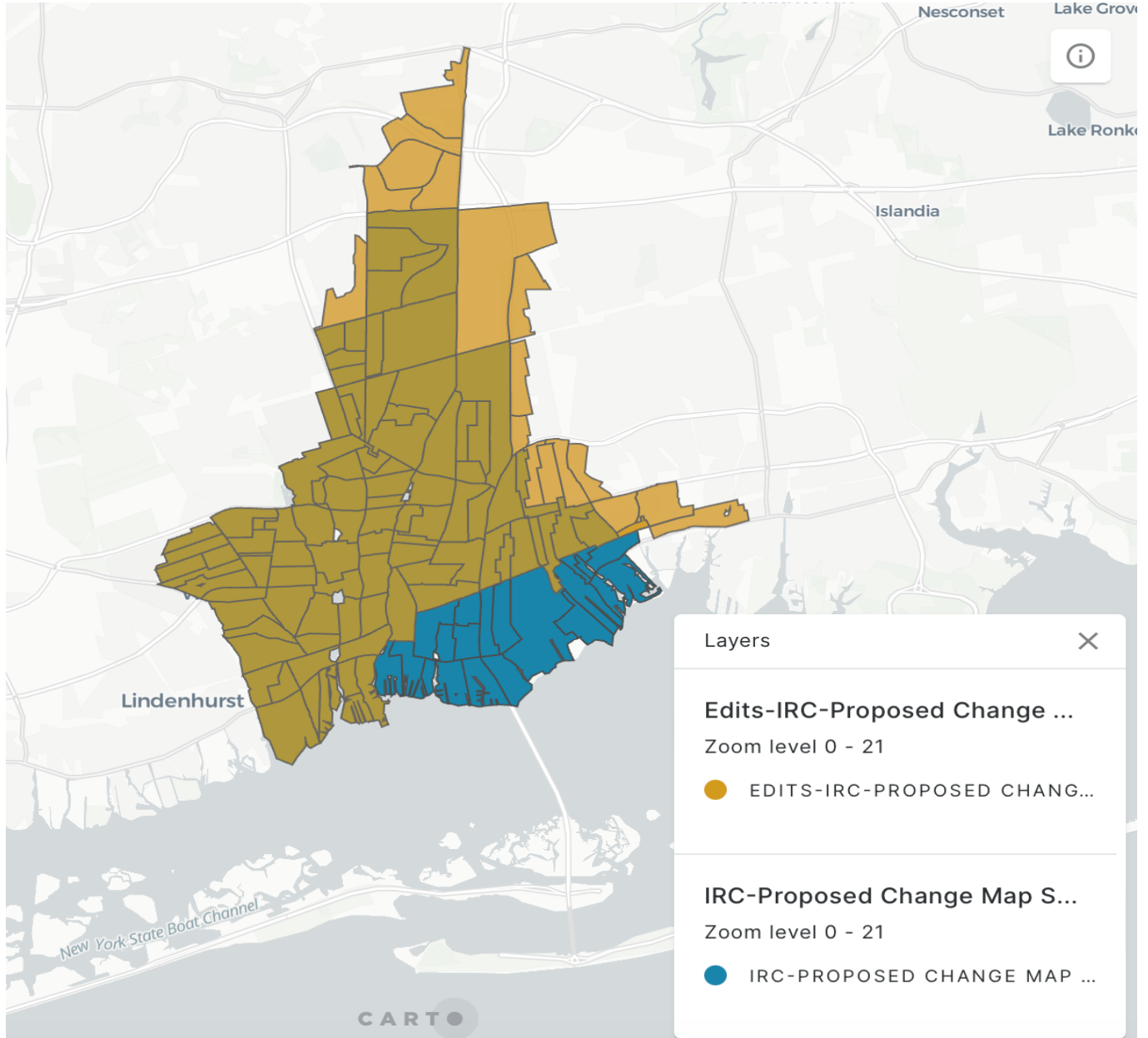
The general rule should be to keep as many EDs North of the Long Island Railroad together contiguously in proposed district AD-9 & 6, and South of the Long Island Railroad together in proposed district AD-7 whenever possible. AD-9 Should, as it crosses into Islip, rarely go south of the LIRR and should never go south of Route 27A.

In facilitating these changes with the least disruption possible and to continue to keep communities of common interest together, the overwhelming number of changes are allocating AD-7 election districts North of the LIRR to AD-9 and AD-9 election districts South of the LIRR to AD-7.

As noted, the governmental lines will be split regardless of any changes made by this Commission. These proposed changes will keep AD-9 and AD-7 more aligned with the communities of common interest that live in the Towns of Babylon and Islip and the incorporated Villages of Babylon and Brightwaters. These are changes that are consistent with the Special Master and would meet with approval from the community.

We again thank the Commission for their good work and we hope that these changes will be incorporated into the final version.

IRC Map & Community Map Contrast



Overview Of Election Districts Moved

Dropped Eds			Added Eds		
Babylon	Huntington	Islip	Babylon	Huntington	Islip
1	0	17	0	6	12

Full List Of Election Districts Moved

Dropped	Added
Babylon 130	Huntington 021
Islip 001	Huntington 069
Islip 003	Huntington 118
Islip 007	Huntington 120
Islip 026	Huntington 148
Islip 031	Huntington 175
Islip 047	Islip 005
Islip 057	Islip 006
Islip 064	Islip 032
Islip 066	Islip 048
Islip 082	Islip 072
Islip 121	Islip 093
Islip 123	Islip 128
Islip 127	Islip 133
Islip 136	Islip 174
Islip 147	Islip 190
Islip 183	Islip 196
Islip 208	Islip 204



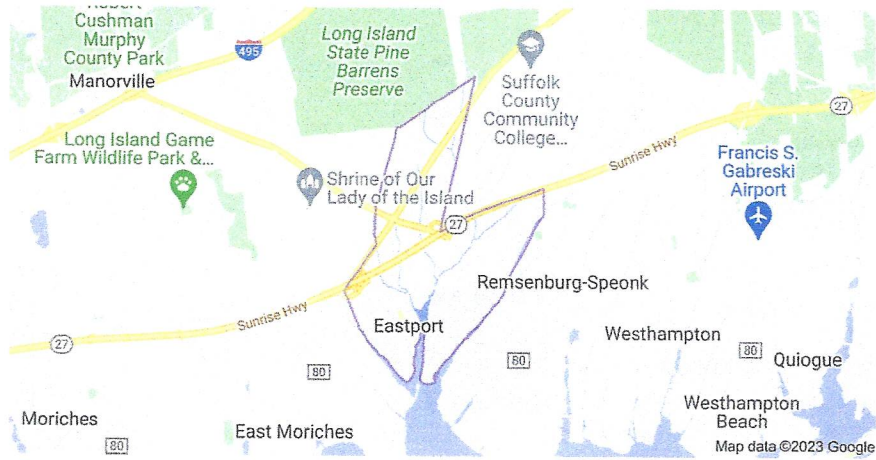


map of eastport, ny



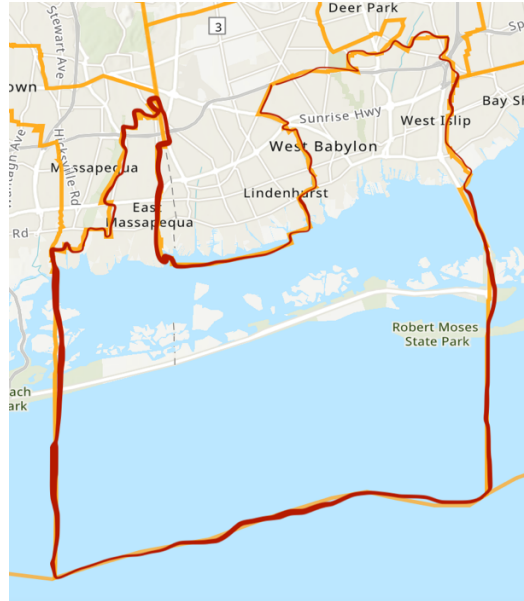
[All](#) [Images](#) [Maps](#) [Shopping](#) [News](#) [More](#) [Tools](#)

About 1,220,000 results (0.38 seconds)



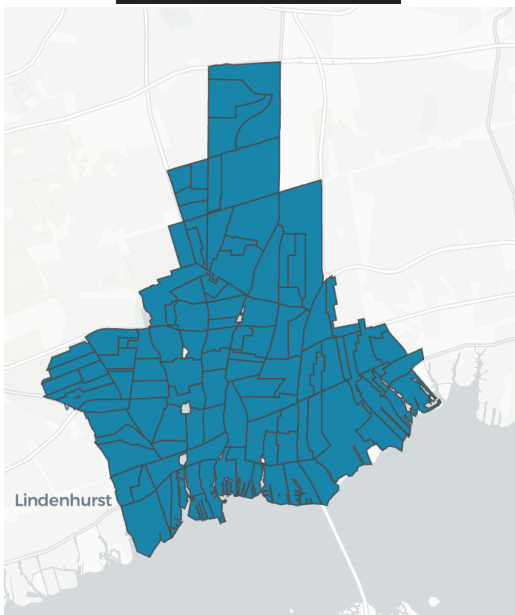
We want to thank the Commission for fixing what has, for over a decade, been a flagrantly inappropriate and deeply problematic Assembly District in Suffolk County, that stretched incredulously as much as it stretched across Nassau and Suffolk County via a creative use of Fire Island.

AD-9

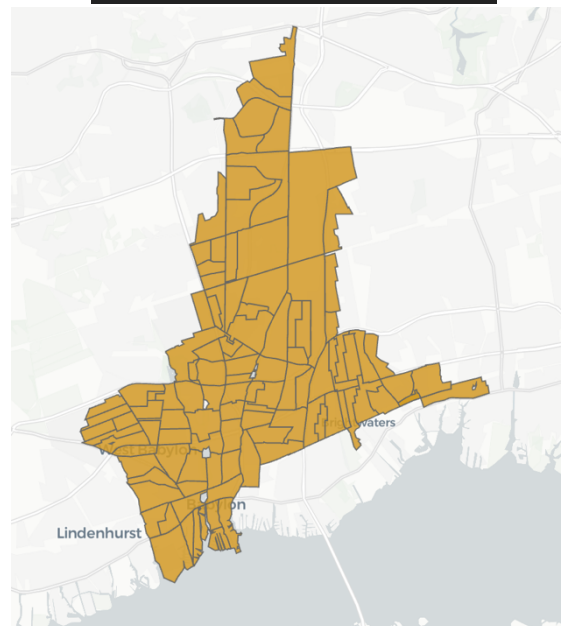


Because the history of this district is so fraught, it is critically important that it be modernized a bit further to ensure that the people are part of a district that structurally makes sense, have a district that is consistent with the Senate Lines drawn by the non-partisan Special Master last year, and protects communities within Babylon Town and Islip Town that have similar interest, and lastly, is easy for folks in the community understand. Here are the proposed changes from the Commission & Community.

IRC Proposed Map



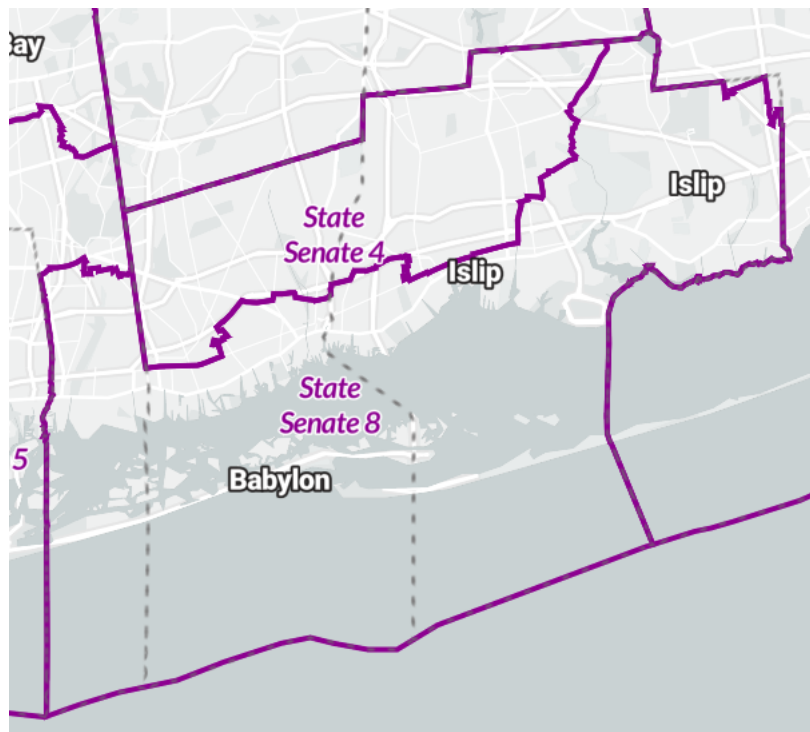
Community Proposed Map



As currently proposed this district by design will have multiple split Towns and school districts. That is inevitable based on the population of the area. Therefore, we are informing the committee that there are some changes we would like to see, to ensure that communities that share common interests, even if they don't always share the same local government or school district.

In the Senate Districts Drawn by the Special Master, this fact of life is acknowledged. West & North Babylon and West & North Bay Shore share more common interests with each other than either is to any of the EDs down by the water, even within their own respective Towns and incorporated Villages. The reverse is also true. That applies to incomes, race, places of worship and where folks gather for community events.

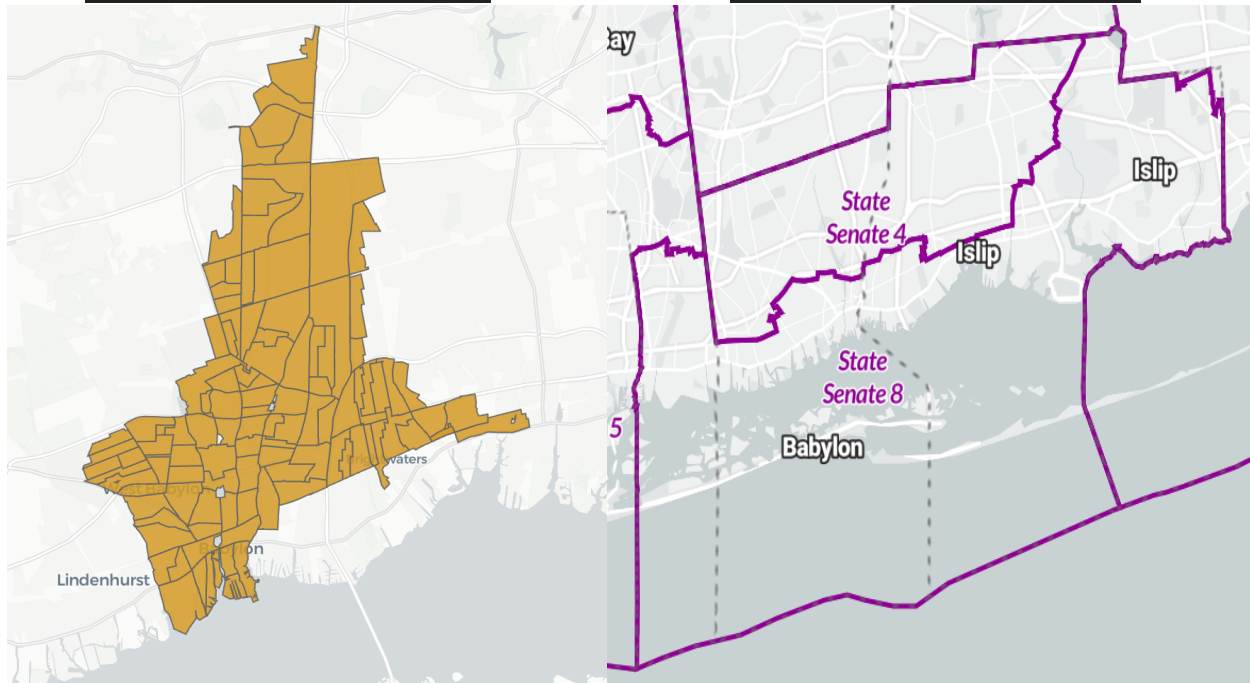
Current Senate Districts



Once again, the Senate lines drawn by the Special Master recognize that the personality of this region is defined by being "North" or "South" of a few key physical landmarks. In SD 4 and SD 8, to keep the communities of common interest together, the Special Master cut across the Incorporated Villages of Brightwater and Babylon not through a governmental line, but a physical marker: Long Island Railroad Line. A similar path would be a helpful guideline for this new district particularly on the Eastern Side where it borders AD-6 & AD 7.

Community Proposed Map

Special Master Senate Map



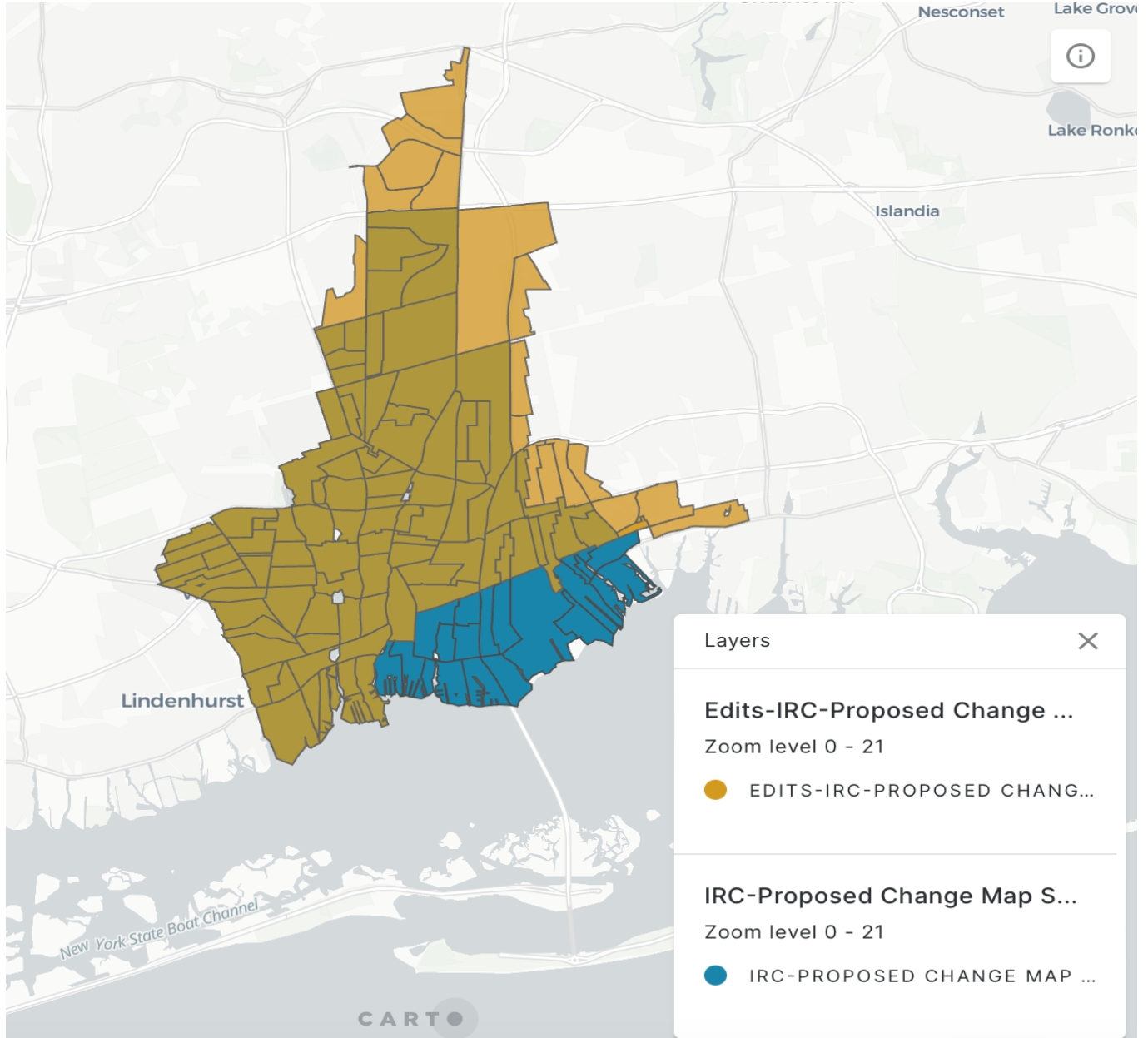
The general rule should be to keep as many EDs North of the Long Island Railroad together contiguously in proposed district AD-9 & 6, and South of the Long Island Railroad together in proposed district AD-7 whenever possible. AD-9 Should, as it crosses into Islip, rarely go south of the LIRR and should never go south of Route 27A.

In facilitating these changes with the least disruption possible and to continue to keep communities of common interest together, the overwhelming number of changes are allocating AD-7 election districts North of the LIRR to AD-9 and AD-9 election districts South of the LIRR to AD-7.

As noted, the governmental lines will be split regardless of any changes made by this Commission. These proposed changes will keep AD-9 and AD-7 more aligned with the communities of common interest that live in the Towns of Babylon and Islip and the incorporated Villages of Babylon and Brightwaters. These are changes that are consistent with the Special Master and would meet with approval from the community.

We again thank the Commission for their good work and we hope that these changes will be incorporated into the final version.

IRC Map & Community Map Contrast



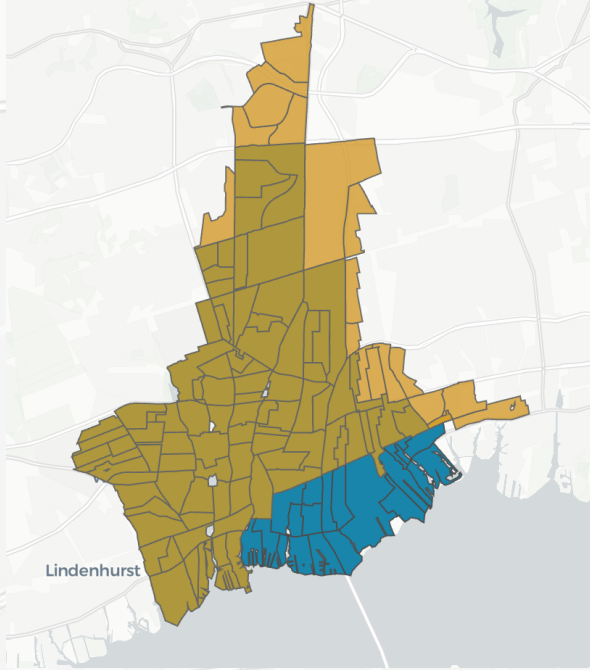
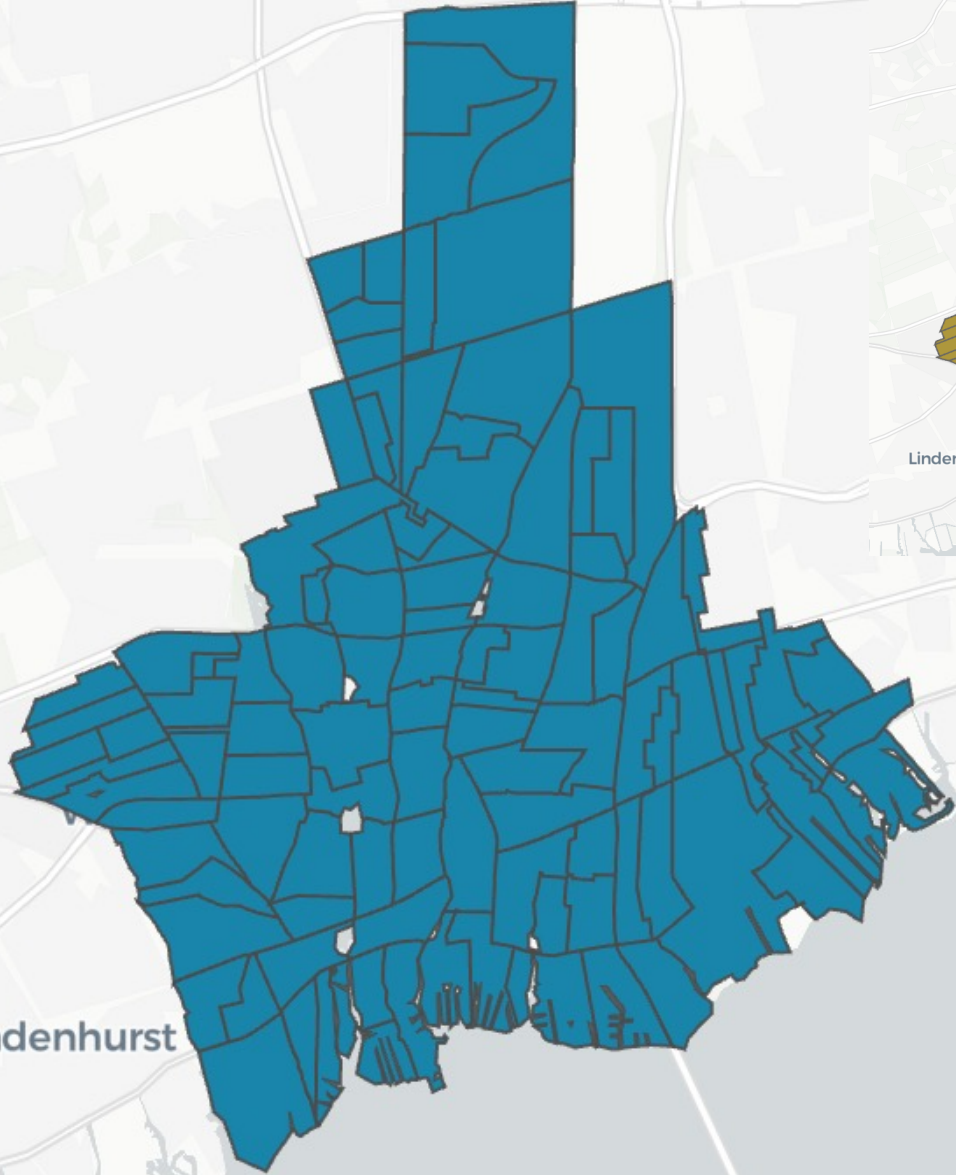
Overview Of Election Districts Moved

Dropped Eds			Added Eds		
Babylon	Huntington	Islip	Babylon	Huntington	Islip
1	0	17	0	6	12

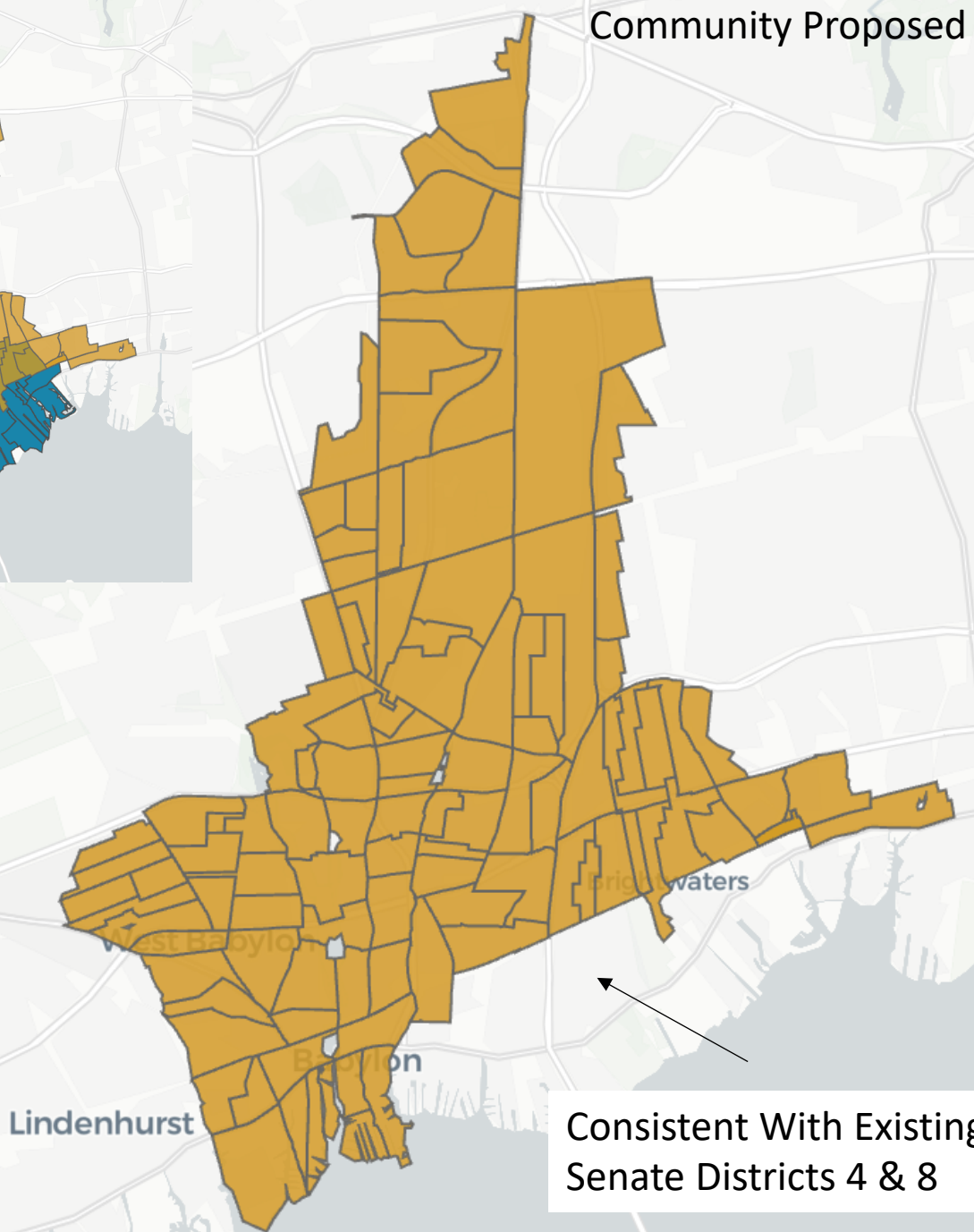
Full List Of Election Districts Moved

Dropped	Added
Babylon 130	Huntington 021
Islip 001	Huntington 069
Islip 003	Huntington 118
Islip 007	Huntington 120
Islip 026	Huntington 148
Islip 031	Huntington 175
Islip 047	Islip 005
Islip 057	Islip 006
Islip 064	Islip 032
Islip 066	Islip 048
Islip 082	Islip 072
Islip 121	Islip 093
Islip 123	Islip 128
Islip 127	Islip 133
Islip 136	Islip 174
Islip 147	Islip 190
Islip 183	Islip 196
Islip 208	Islip 204

IRC Proposed Map

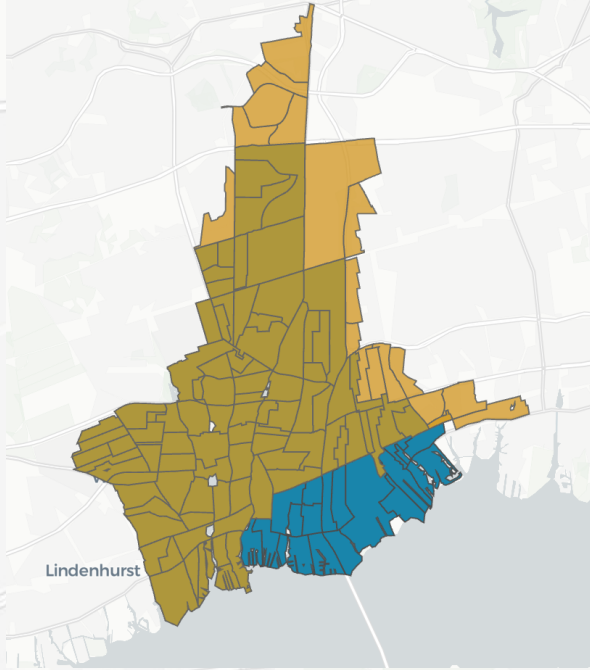
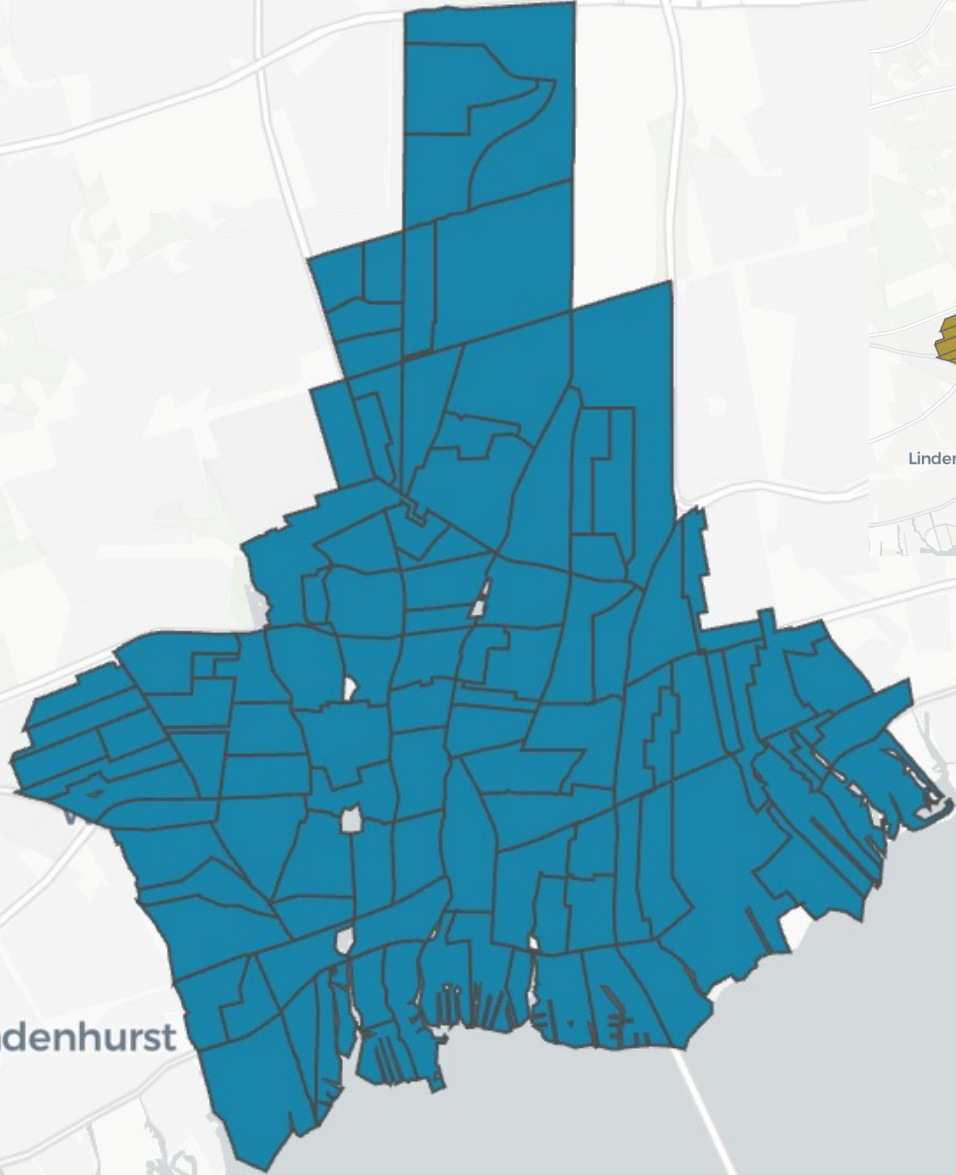


Community Proposed Map

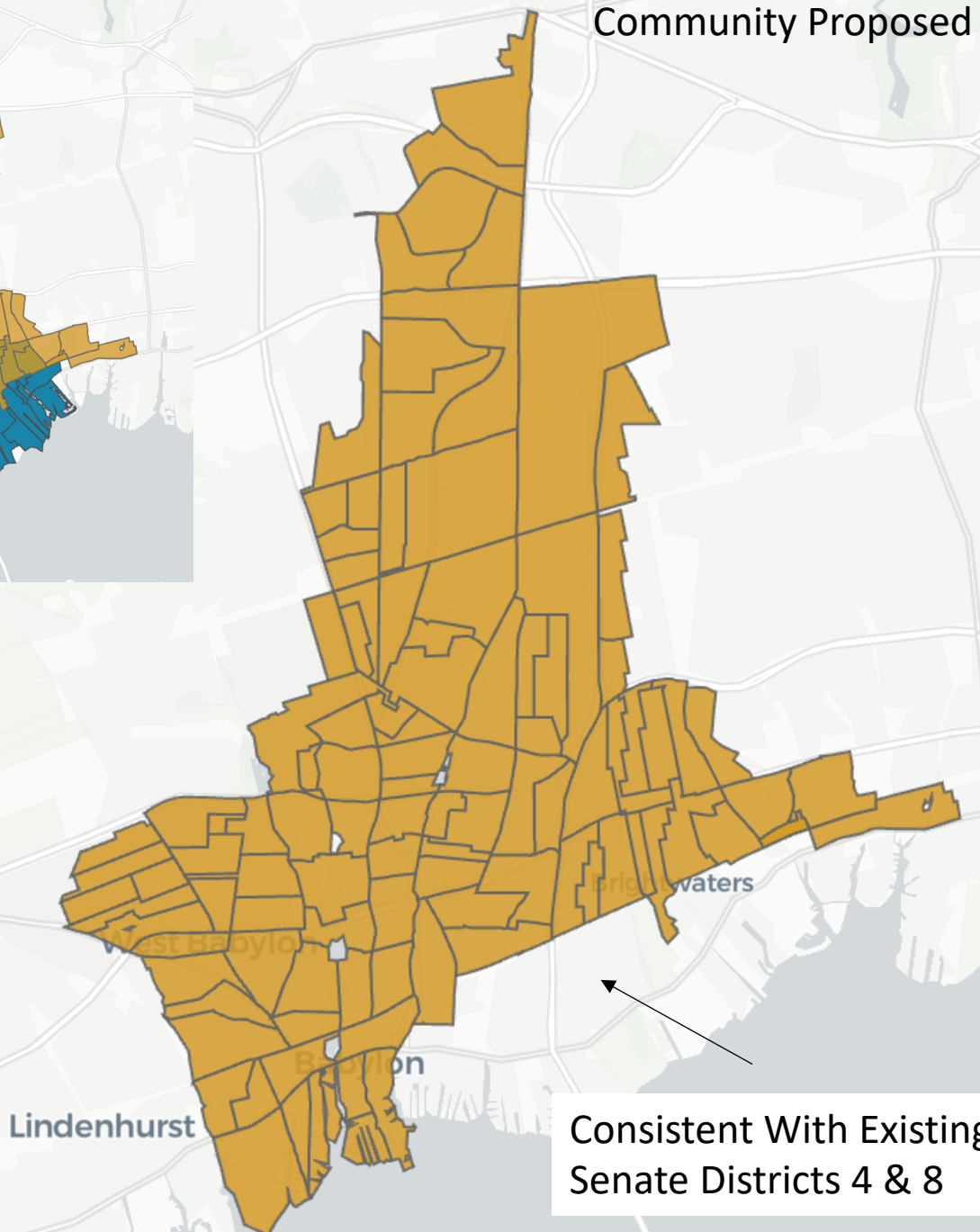


Consistent With Existing Senate Districts 4 & 8

IRC Proposed Map



Community Proposed Map



Consistent With Existing Senate Districts 4 & 8

From: [Shoshana Hershkowitz](#)
To: [Submissions](#)
Subject: Assembly Redistricting
Date: Wednesday, March 1, 2023 3:13:43 PM

I am submitting testimony regarding the proposed redistricting in AD4/AD5. I live in South Setauket, which has been part of AD4 for all the years that I have lived in this community. I am in disagreement with the proposal to redistrict South Setauket into AD5, as this separates us from the rest of the community whose resources we use. We attend Three Village schools and pay the property taxes of the school district. We share the same library and fire districts as our neighbors in Three Village. And yet, we are being separated from our community in our Assembly representation.

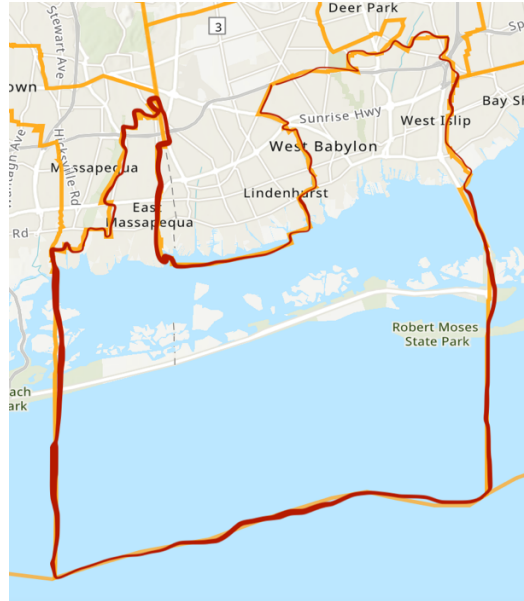
To drill down even further, there is no greater community of interest than your child's school. And this proposed redistricting splits that community of interest. We are zoned for Arrowhead Elementary School in East Setauket, Robert Cushman Murphy Jr. High in Stony Brook, and Ward Melville High School in East Setauket. With this proposed redistricting change, South Setauket would be separated from other parents and community members at all three learning levels. The bulk of our taxes go to school property taxes, and this proposal removes us from the rest of our school community.

I urge the commission to reject this proposal, and keep South Setauket in the 4th Assembly District.

Shoshana Hershkowitz
10 Tracker Lane
South Setauket, NY 11720
(516) 381-3417

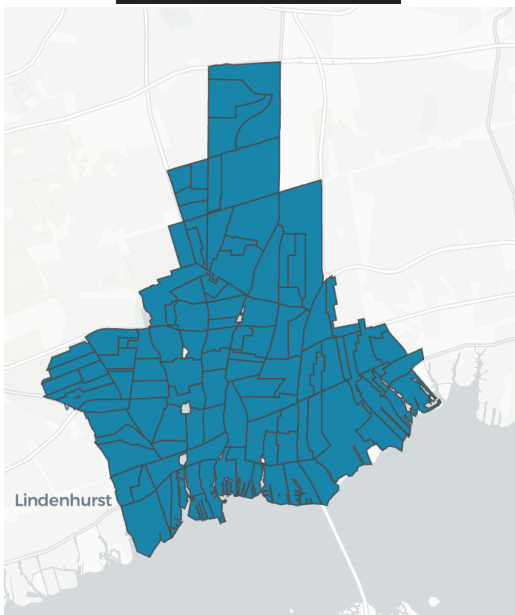
We want to thank the Commission for fixing what has, for over a decade, been a flagrantly inappropriate and deeply problematic Assembly District in Suffolk County, that stretched incredulity as much as it stretched across Nassau and Suffolk County via a creative use of Fire Island.

AD-9

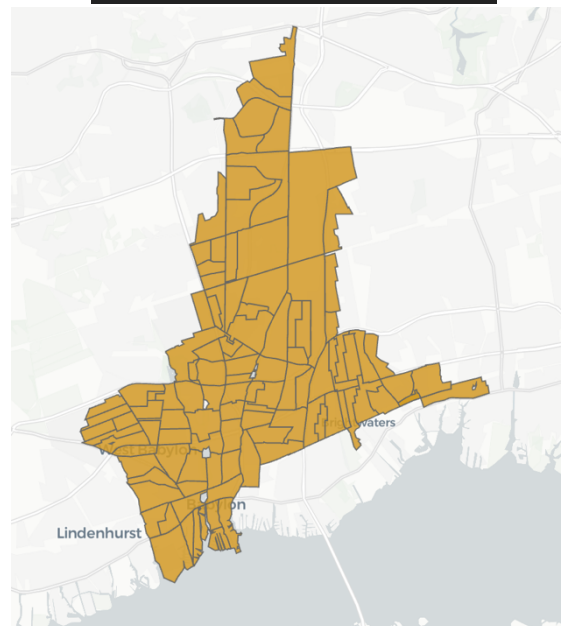


Because the history of this district is so fraught, it is critically important that it be modernized a bit further to ensure that the people are part of a district that structurally makes sense, have a district that is consistent with the Senate Lines drawn by the non-partisan Special Master last year, and protects communities within Babylon Town and Islip Town that have similar interest, and lastly, is easy for folks in the community understand. Here are the proposed changes from the Commission & Community.

IRC Proposed Map



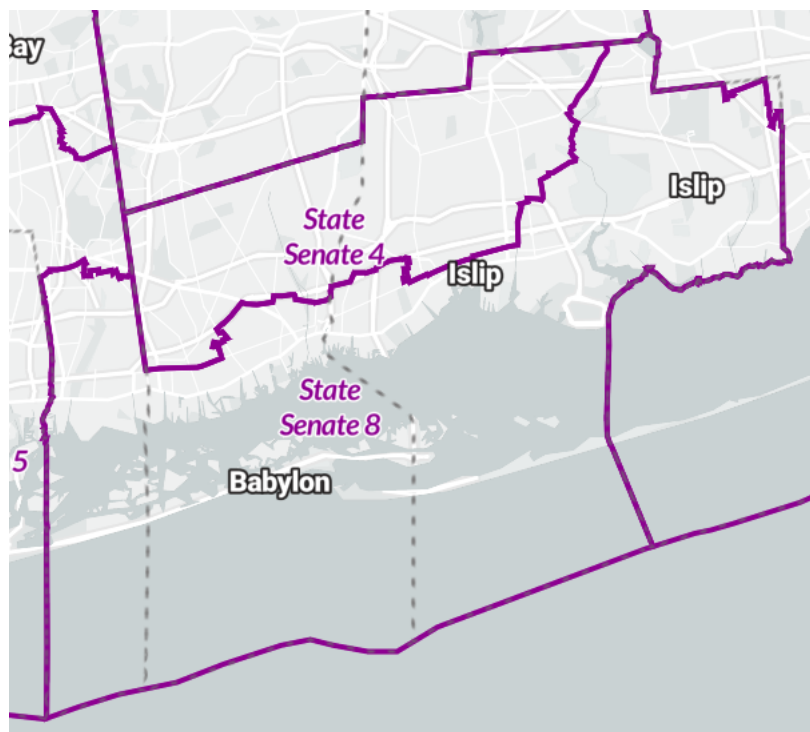
Community Proposed Map



As currently proposed this district by design will have multiple split Towns and school districts. That is inevitable based on the population of the area. Therefore, we are informing the committee that there are some changes we would like to see, to ensure that communities that share common interests, even if they don't always share the same local government or school district.

In the Senate Districts Drawn by the Special Master, this fact of life is acknowledged. West & North Babylon and West & North Bay Shore share more common interests with each other than either is to any of the EDs down by the water, even within their own respective Towns and incorporated Villages. The reverse is also true. That applies to incomes, race, places of worship and where folks gather for community events.

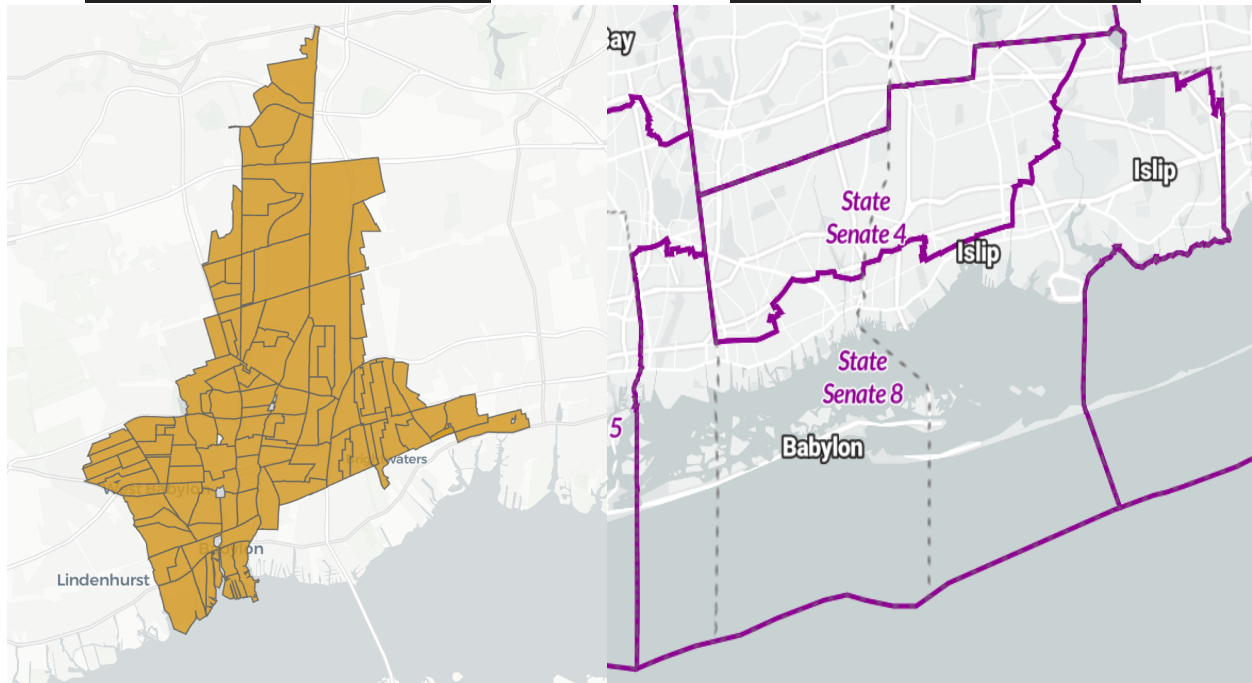
Current Senate Districts



Once again, the Senate lines drawn by the Special Master recognize that the personality of this region is defined by being "North" or "South" of a few key physical landmarks. In SD 4 and SD 8, to keep the communities of common interest together, the Special Master cut across the Incorporated Villages of Brightwater and Babylon not through a governmental line, but a physical marker: Long Island Railroad Line. A similar path would be a helpful guideline for this new district particularly on the Eastern Side where it borders AD-6 & AD 7.

Community Proposed Map

Special Master Senate Map



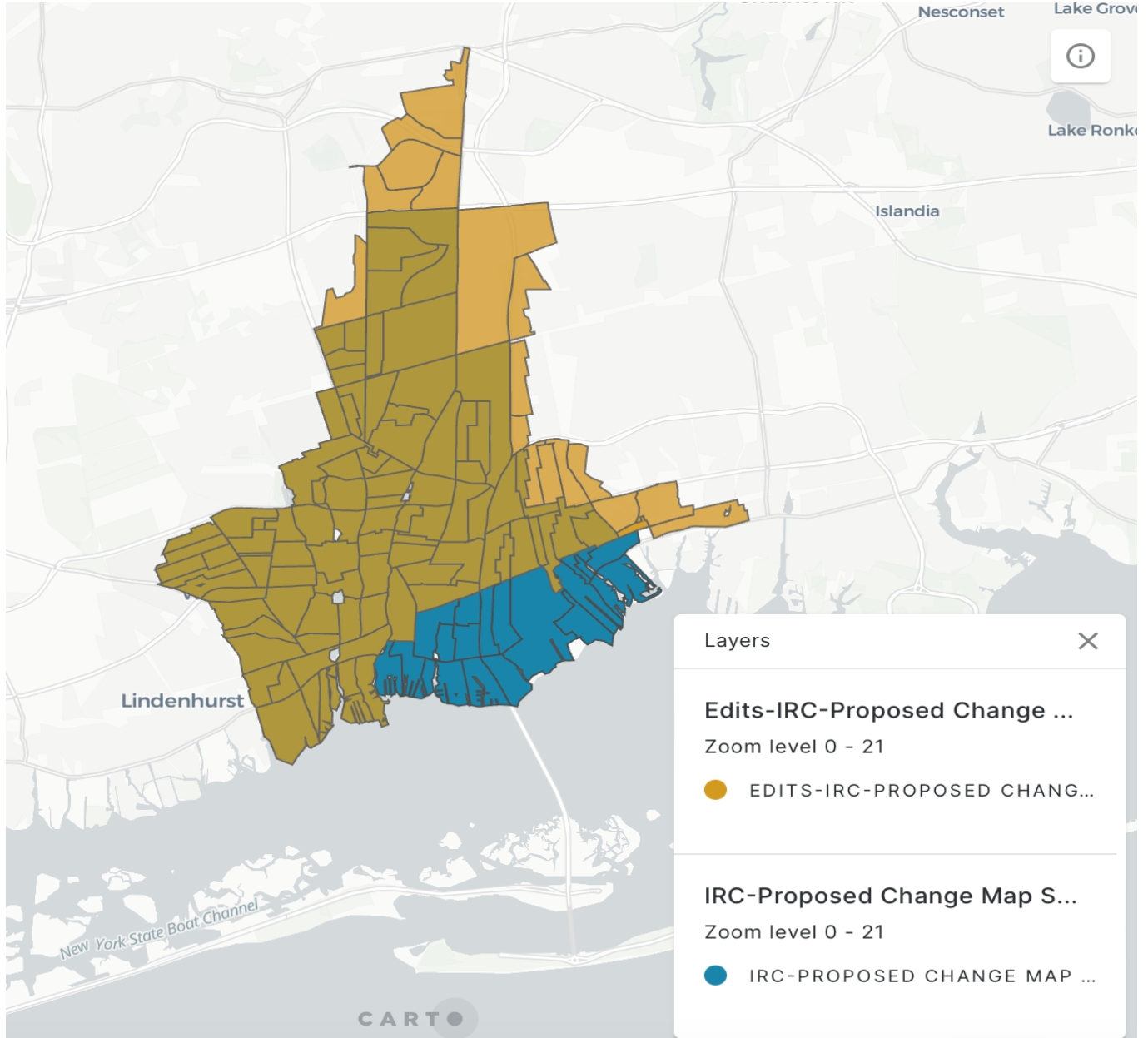
The general rule should be to keep as many EDs North of the Long Island Railroad together contiguously in proposed district AD-9 & 6, and South of the Long Island Railroad together in proposed district AD-7 whenever possible. AD-9 Should, as it crosses into Islip, rarely go south of the LIRR and should never go south of Route 27A.

In facilitating these changes with the least disruption possible and to continue to keep communities of common interest together, the overwhelming number of changes are allocating AD-7 election districts North of the LIRR to AD-9 and AD-9 election districts South of the LIRR to AD-7.

As noted, the governmental lines will be split regardless of any changes made by this Commission. These proposed changes will keep AD-9 and AD-7 more aligned with the communities of common interest that live in the Towns of Babylon and Islip and the incorporated Villages of Babylon and Brightwaters. These are changes that are consistent with the Special Master and would meet with approval from the community.

We again thank the Commission for their good work and we hope that these changes will be incorporated into the final version.

IRC Map & Community Map Contrast



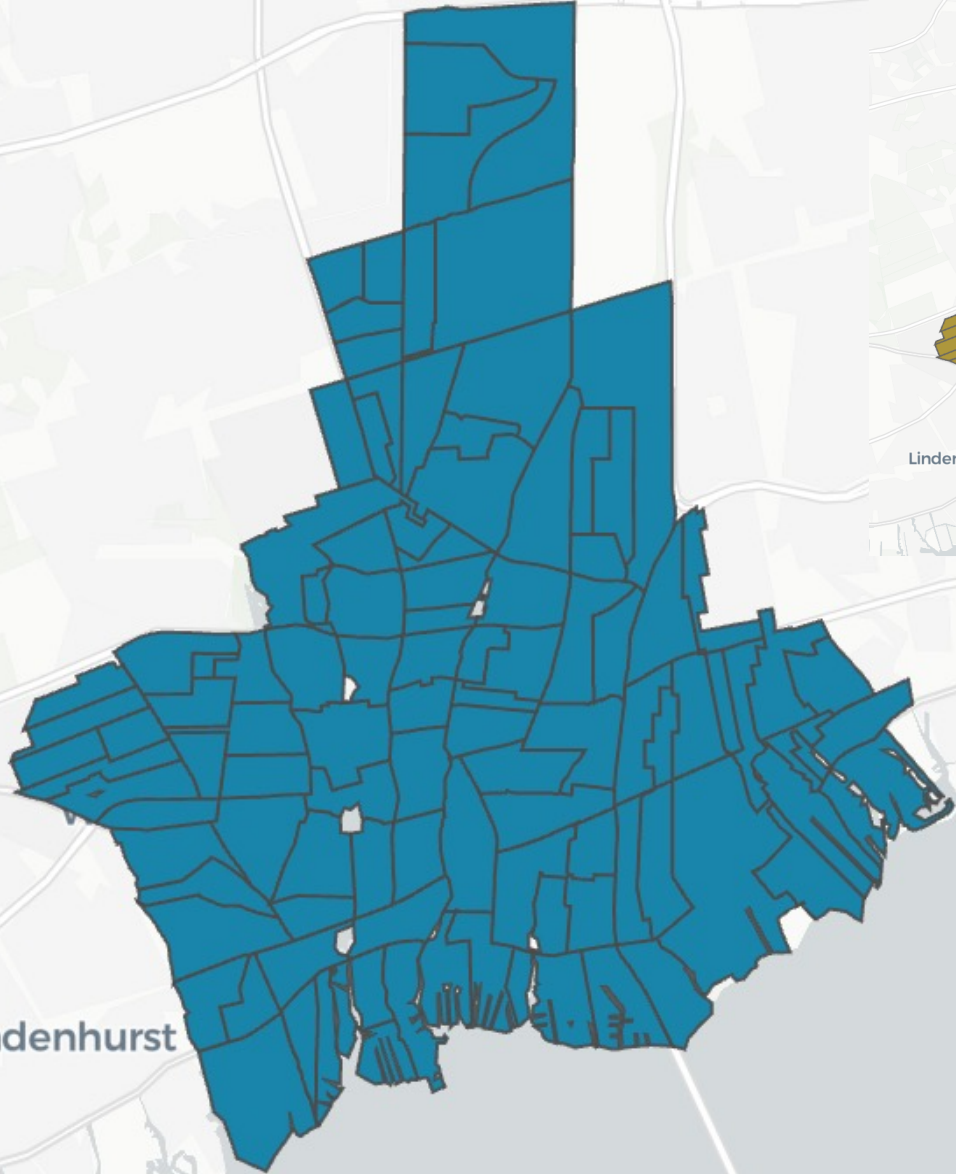
Overview Of Election Districts Moved

Dropped Eds			Added Eds		
Babylon	Huntington	Islip	Babylon	Huntington	Islip
1	0	17	0	6	12

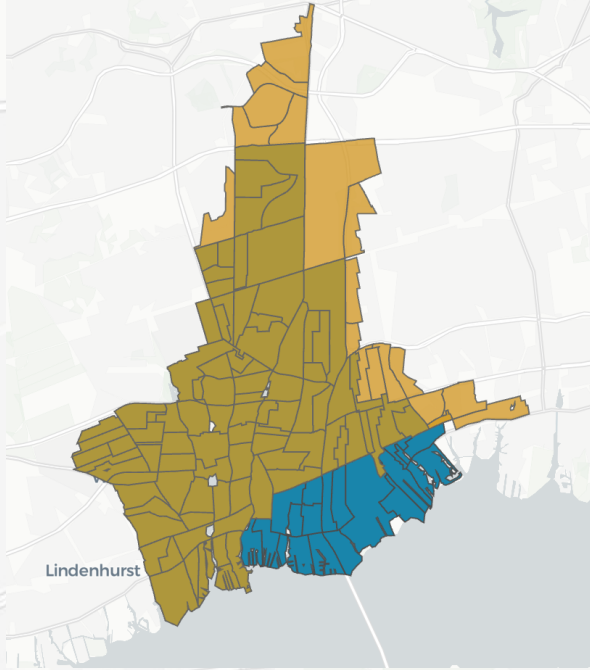
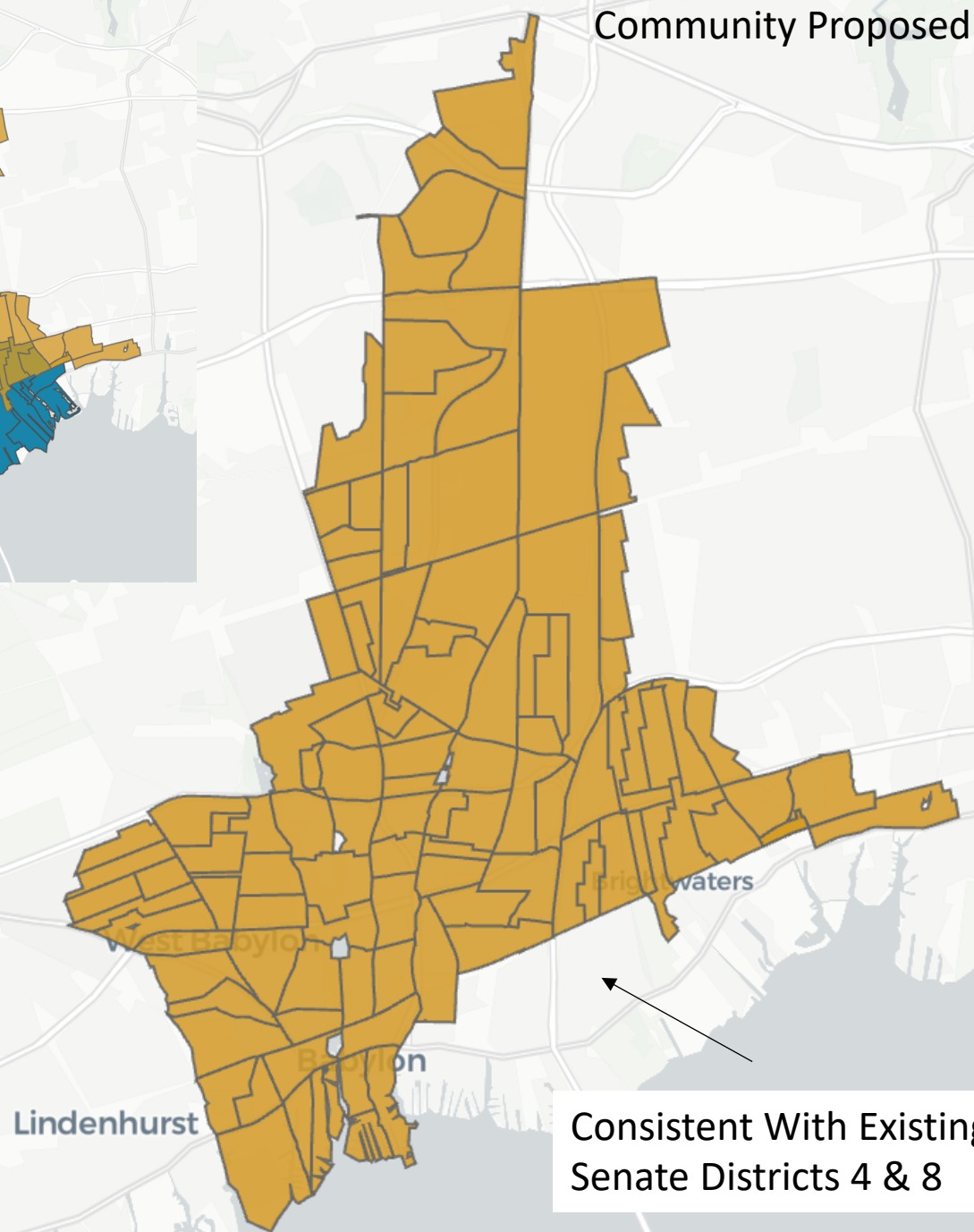
Full List Of Election Districts Moved

Dropped	Added
Babylon 130	Huntington 021
Islip 001	Huntington 069
Islip 003	Huntington 118
Islip 007	Huntington 120
Islip 026	Huntington 148
Islip 031	Huntington 175
Islip 047	Islip 005
Islip 057	Islip 006
Islip 064	Islip 032
Islip 066	Islip 048
Islip 082	Islip 072
Islip 121	Islip 093
Islip 123	Islip 128
Islip 127	Islip 133
Islip 136	Islip 174
Islip 147	Islip 190
Islip 183	Islip 196
Islip 208	Islip 204

IRC Proposed Map



Community Proposed Map

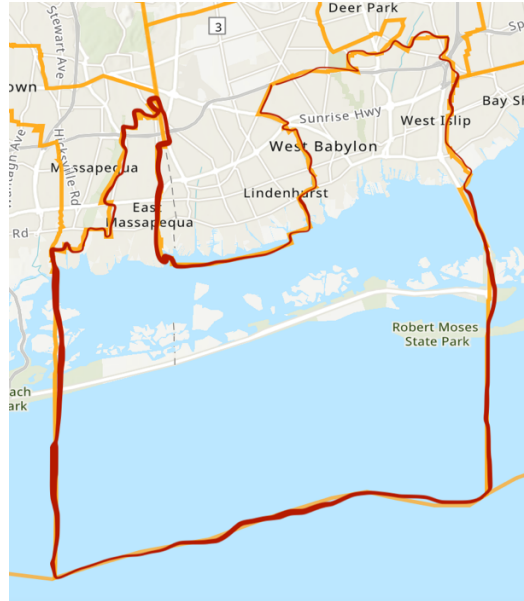


Consistent With Existing Senate Districts 4 & 8



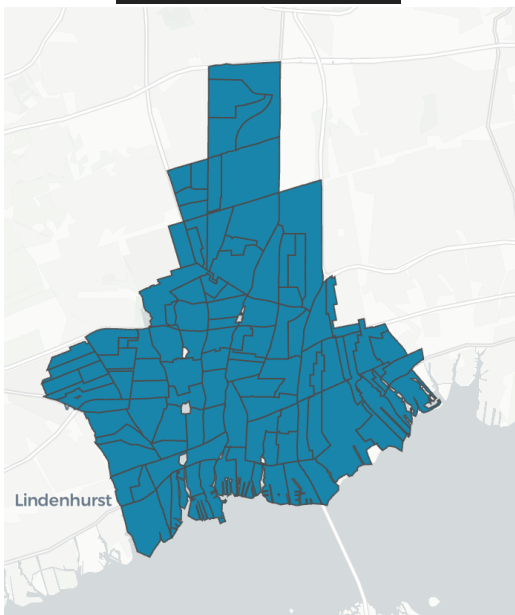
We want to thank the Commission for fixing what has, for over a decade, been a flagrantly inappropriate and deeply problematic Assembly District in Suffolk County, that stretched incredulity as much as it stretched across Nassau and Suffolk County via a creative use of Fire Island.

AD-9

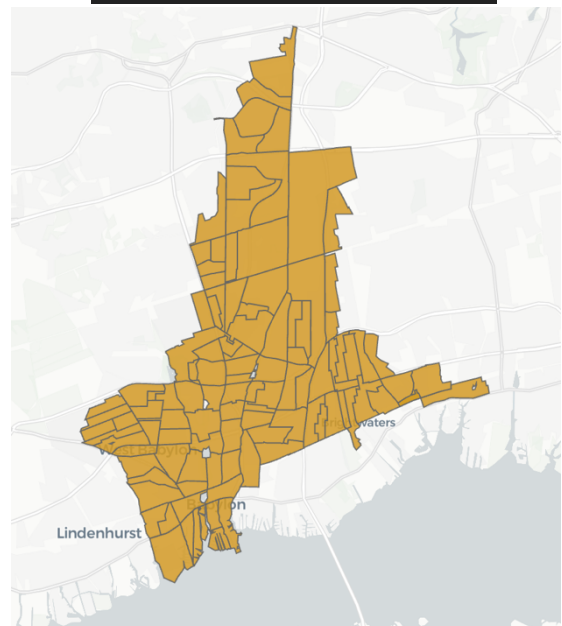


Because the history of this district is so fraught, it is critically important that it be modernized a bit further to ensure that the people are part of a district that structurally makes sense, have a district that is consistent with the Senate Lines drawn by the non-partisan Special Master last year, and protects communities within Babylon Town and Islip Town that have similar interest, and lastly, is easy for folks in the community understand. Here are the proposed changes from the Commission & Community.

IRC Proposed Map



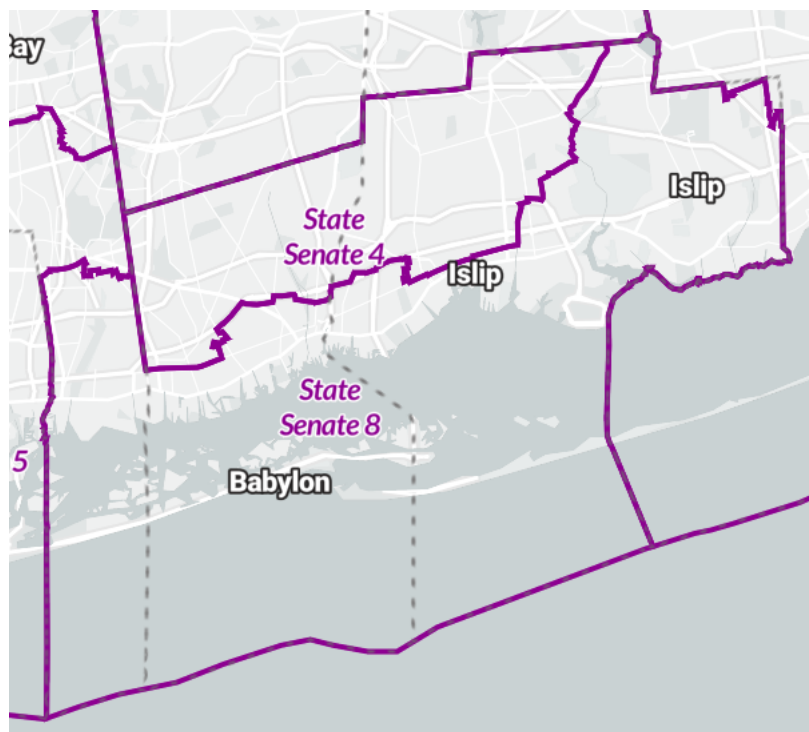
Community Proposed Map



As currently proposed this district by design will have multiple split Towns and school districts. That is inevitable based on the population of the area. Therefore, we are informing the committee that there are some changes we would like to see, to ensure that communities that share common interests, even if they don't always share the same local government or school district.

In the Senate Districts Drawn by the Special Master, this fact of life is acknowledged. West & North Babylon and West & North Bay Shore share more common interests with each other than either is to any of the EDs down by the water, even within their own respective Towns and incorporated Villages. The reverse is also true. That applies to incomes, race, places of worship and where folks gather for community events.

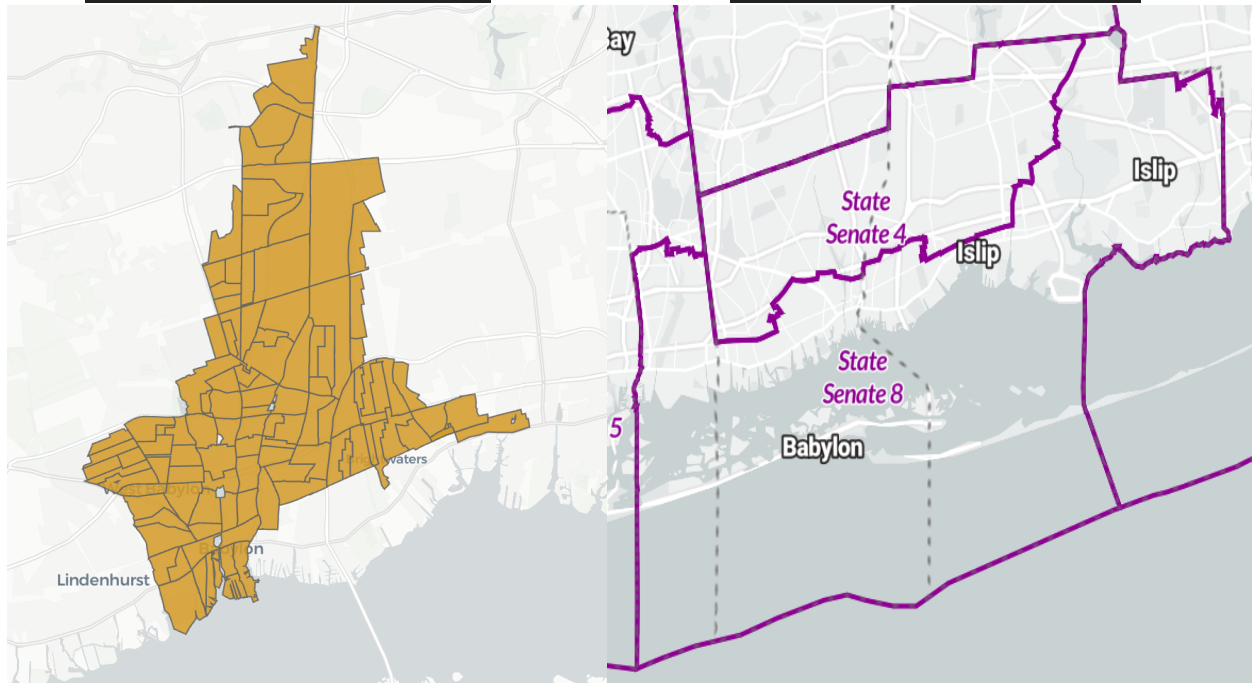
Current Senate Districts



Once again, the Senate lines drawn by the Special Master recognize that the personality of this region is defined by being "North" or "South" of a few key physical landmarks. In SD 4 and SD 8, to keep the communities of common interest together, the Special Master cut across the Incorporated Villages of Brightwater and Babylon not through a governmental line, but a physical marker: Long Island Railroad Line. A similar path would be a helpful guideline for this new district particularly on the Eastern Side where it borders AD-6 & AD 7.

Community Proposed Map

Special Master Senate Map



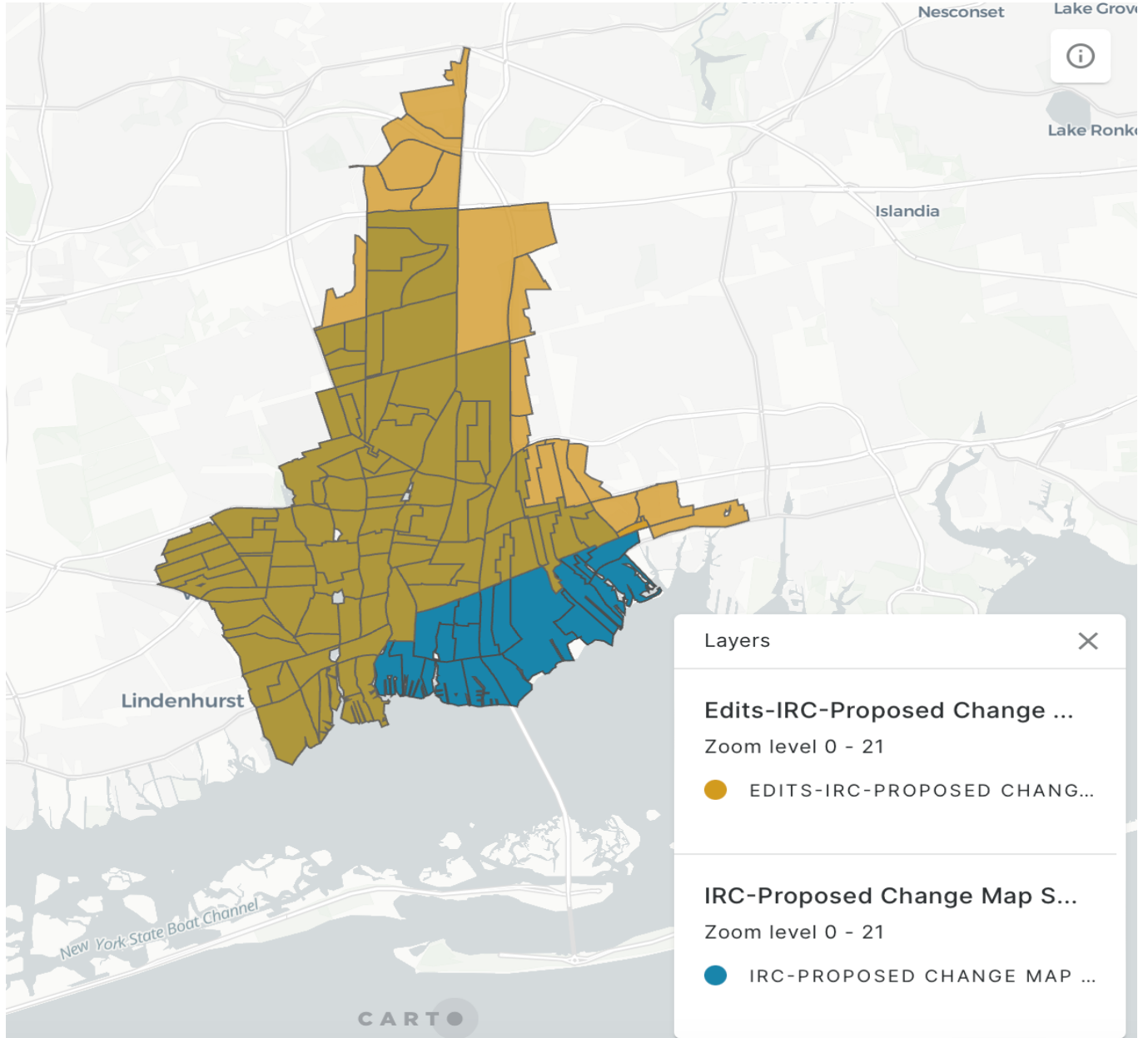
The general rule should be to keep as many EDs North of the Long Island Railroad together contiguously in proposed district AD-9 & 6, and South of the Long Island Railroad together in proposed district AD-7 whenever possible. AD-9 Should, as it crosses into Islip, rarely go south of the LIRR and should never go south of Route 27A.

In facilitating these changes with the least disruption possible and to continue to keep communities of common interest together, the overwhelming number of changes are allocating AD-7 election districts North of the LIRR to AD-9 and AD-9 election districts South of the LIRR to AD-7.

As noted, the governmental lines will be split regardless of any changes made by this Commission. These proposed changes will keep AD-9 and AD-7 more aligned with the communities of common interest that live in the Towns of Babylon and Islip and the incorporated Villages of Babylon and Brightwaters. These are changes that are consistent with the Special Master and would meet with approval from the community.

We again thank the Commission for their good work and we hope that these changes will be incorporated into the final version.

IRC Map & Community Map Contrast



Overview Of Election Districts Moved

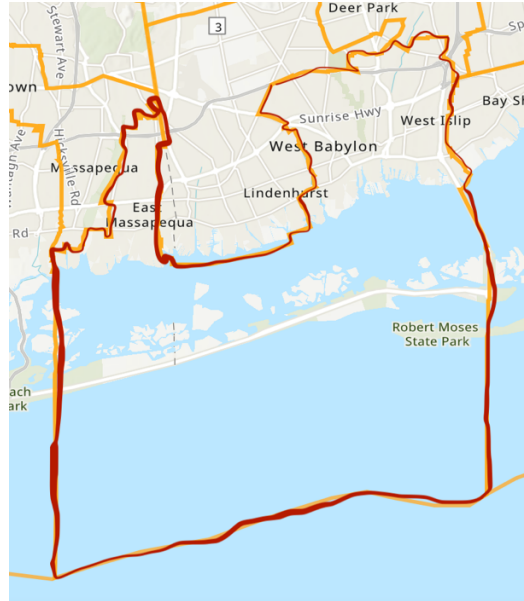
Dropped Eds			Added Eds		
Babylon	Huntington	Islip	Babylon	Huntington	Islip
1	0	17	0	6	12

Full List Of Election Districts Moved

Dropped	Added
Babylon 130	Huntington 021
Islip 001	Huntington 069
Islip 003	Huntington 118
Islip 007	Huntington 120
Islip 026	Huntington 148
Islip 031	Huntington 175
Islip 047	Islip 005
Islip 057	Islip 006
Islip 064	Islip 032
Islip 066	Islip 048
Islip 082	Islip 072
Islip 121	Islip 093
Islip 123	Islip 128
Islip 127	Islip 133
Islip 136	Islip 174
Islip 147	Islip 190
Islip 183	Islip 196
Islip 208	Islip 204

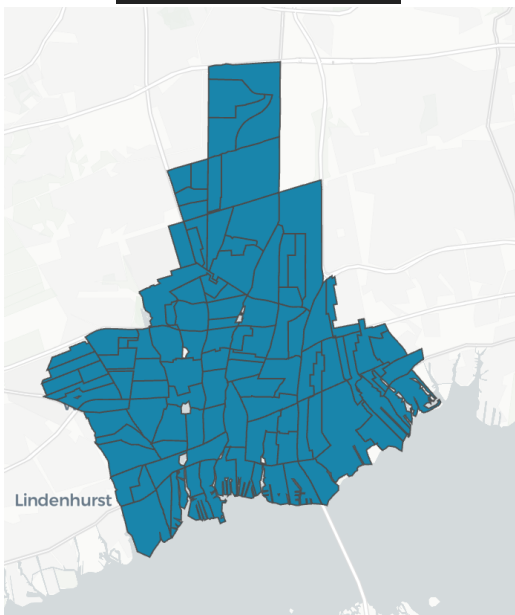
We want to thank the Commission for fixing what has, for over a decade, been a flagrantly inappropriate and deeply problematic Assembly District in Suffolk County, that stretched incredulity as much as it stretched across Nassau and Suffolk County via a creative use of Fire Island.

AD-9

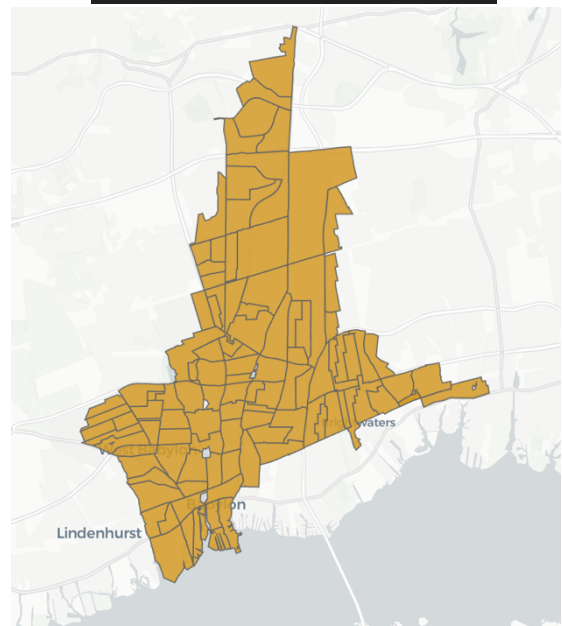


Because the history of this district is so fraught, it is critically important that it be modernized a bit further to ensure that the people are part of a district that structurally makes sense, have a district that is consistent with the Senate Lines drawn by the non-partisan Special Master last year, and protects communities within Babylon Town and Islip Town that have similar interest, and lastly, is easy for folks in the community understand. Here are the proposed changes from the Commission & Community.

IRC Proposed Map



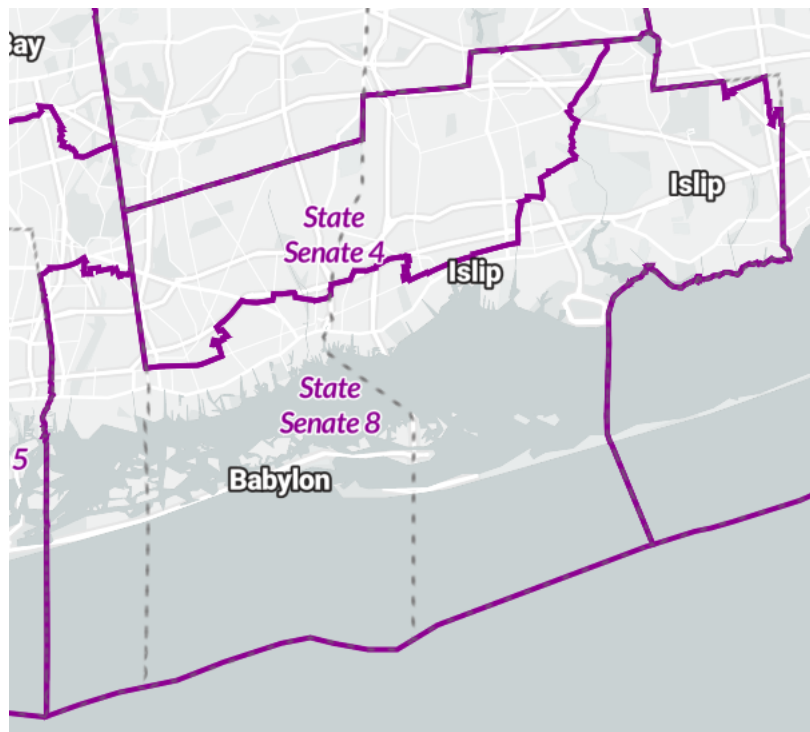
Community Proposed Map



As currently proposed this district by design will have multiple split Towns and school districts. That is inevitable based on the population of the area. Therefore, we are informing the committee that there are some changes we would like to see, to ensure that communities that share common interests, even if they don't always share the same local government or school district.

In the Senate Districts Drawn by the Special Master, this fact of life is acknowledged. West & North Babylon and West & North Bay Shore share more common interests with each other than either is to any of the EDs down by the water, even within their own respective Towns and incorporated Villages. The reverse is also true. That applies to incomes, race, places of worship and where folks gather for community events.

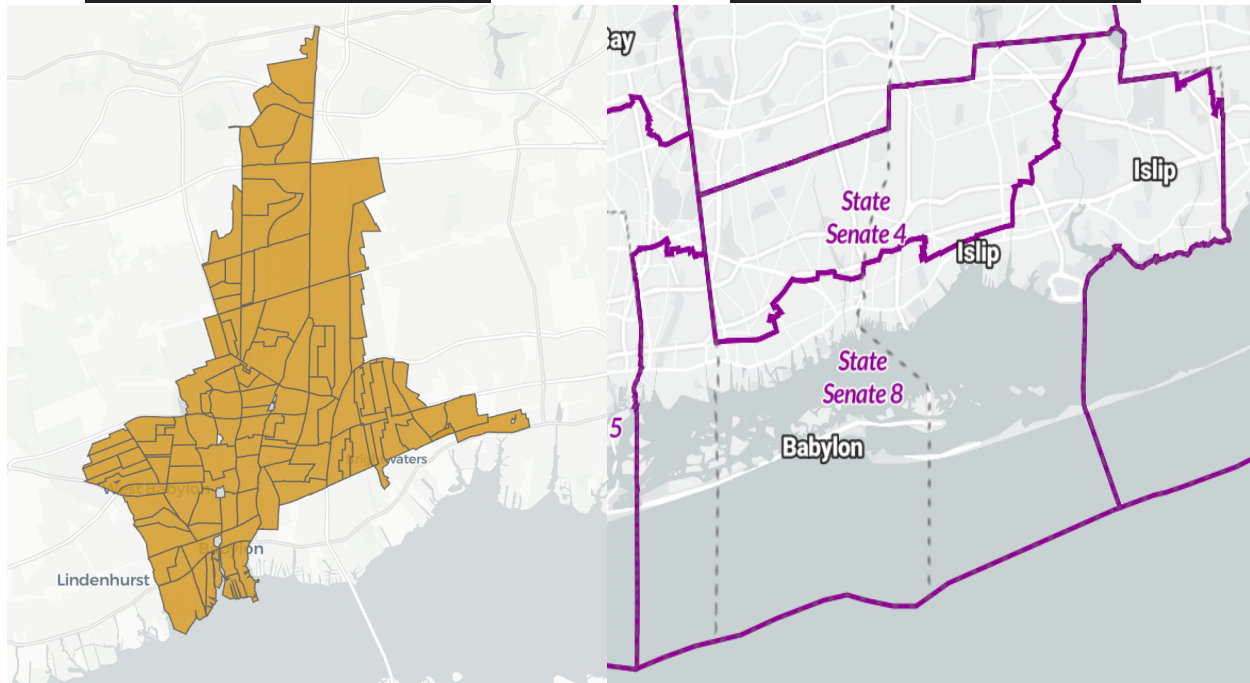
Current Senate Districts



Once again, the Senate lines drawn by the Special Master recognize that the personality of this region is defined by being "North" or "South" of a few key physical landmarks. In SD 4 and SD 8, to keep the communities of common interest together, the Special Master cut across the Incorporated Villages of Brightwater and Babylon not through a governmental line, but a physical marker: Long Island Railroad Line. A similar path would be a helpful guideline for this new district particularly on the Eastern Side where it borders AD-6 & AD 7.

Community Proposed Map

Special Master Senate Map



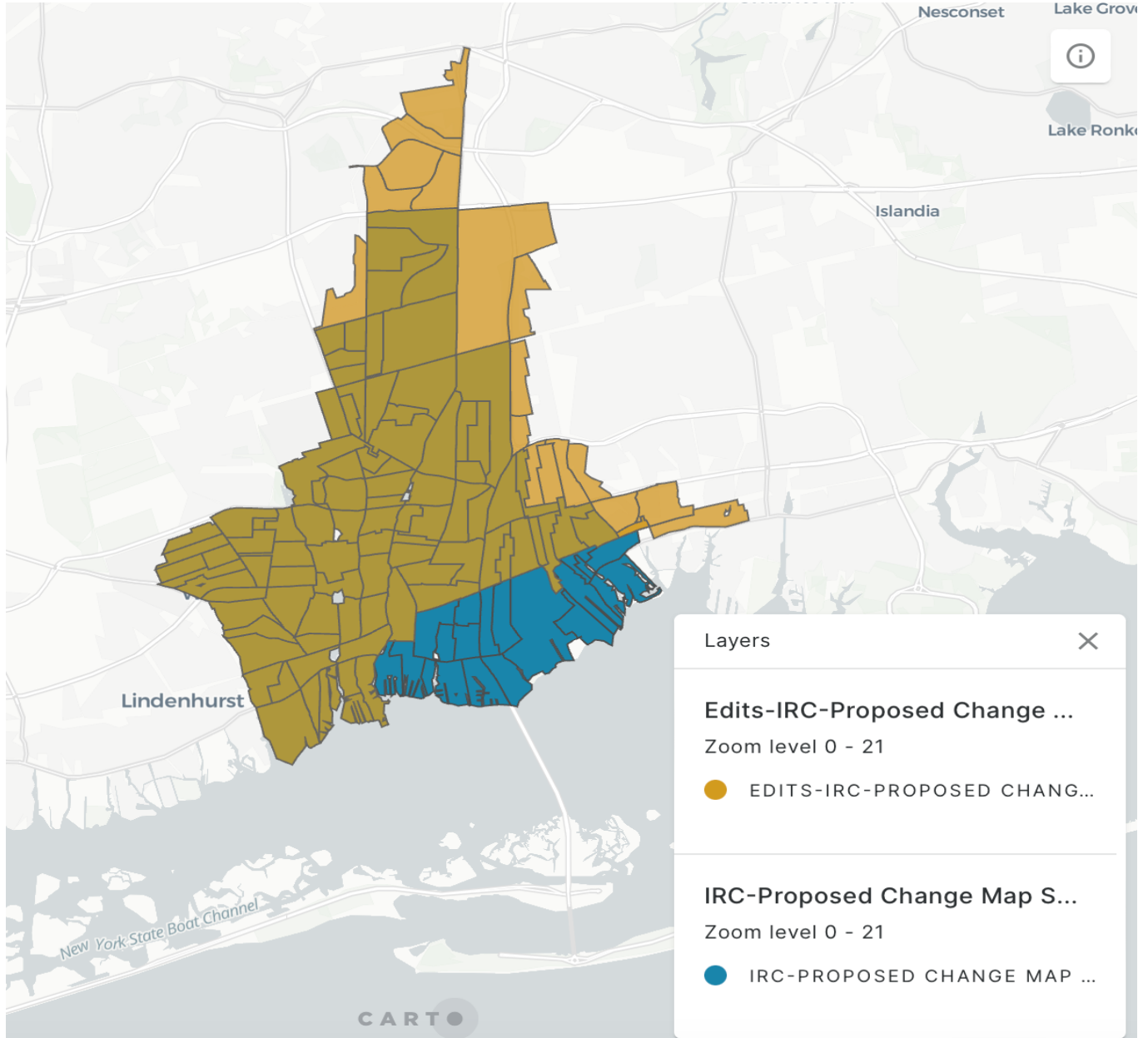
The general rule should be to keep as many EDs North of the Long Island Railroad together contiguously in proposed district AD-9 & 6, and South of the Long Island Railroad together in proposed district AD-7 whenever possible. AD-9 Should, as it crosses into Islip, rarely go south of the LIRR and should never go south of Route 27A.

In facilitating these changes with the least disruption possible and to continue to keep communities of common interest together, the overwhelming number of changes are allocating AD-7 election districts North of the LIRR to AD-9 and AD-9 election districts South of the LIRR to AD-7.

As noted, the governmental lines will be split regardless of any changes made by this Commission. These proposed changes will keep AD-9 and AD-7 more aligned with the communities of common interest that live in the Towns of Babylon and Islip and the incorporated Villages of Babylon and Brightwaters. These are changes that are consistent with the Special Master and would meet with approval from the community.

We again thank the Commission for their good work and we hope that these changes will be incorporated into the final version.

IRC Map & Community Map Contrast



Overview Of Election Districts Moved

Dropped Eds			Added Eds		
Babylon	Huntington	Islip	Babylon	Huntington	Islip
1	0	17	0	6	12

Full List Of Election Districts Moved

Dropped	Added
Babylon 130	Huntington 021
Islip 001	Huntington 069
Islip 003	Huntington 118
Islip 007	Huntington 120
Islip 026	Huntington 148
Islip 031	Huntington 175
Islip 047	Islip 005
Islip 057	Islip 006
Islip 064	Islip 032
Islip 066	Islip 048
Islip 082	Islip 072
Islip 121	Islip 093
Islip 123	Islip 128
Islip 127	Islip 133
Islip 136	Islip 174
Islip 147	Islip 190
Islip 183	Islip 196
Islip 208	Islip 204